



POTS AND PLANTERS

POT VARIATIONS

We provide a variety of pot options for your need and aesthetic. These are indicated for all applicable pots and planters in the catalogue.



Option 1: Without base.



Option 2: Without base with drip tray.



Option 3: With base.



Option 4: With base and drip tray.

PEBBLE RANGE



OBLIQUE PEBBLE POT (SMALL)

IGNP012

Material	Glass fibre reinforced polyconcrete
Height	700mm
Width	460mm
Length	610mm
Weight	21kg
Other Specifications/Notes	Material width: 6 - 8mm, 40mm internal lip return with internal vertical return, horizontal internal support ribs. Detailed drawings can be supplied

IGNP012T Material: GRP Height: 80mm Weight: 9kg



OBLIQUE PEBBLE POT (MEDIUM)

IGNP013

Material	Glass fibre reinforced polyconcrete
Height	1m
Width	640mm
Length	870mm
Weight	51kg
Other Specifications/Notes	Material width: 6 - 8mm, 40mm internal lip return with internal vertical return, horizontal internal support ribs. Detailed drawings can be supplied

IGNP013T Material: GRP Height: 80mm Weight: 11kg



OBLIQUE PEBBLE POT (LARGE)

IGNP014

Material	Glass fibre reinforced polyconcrete
Height	1.1m
Width	840mm
Length	1.050m
Weight	68kg
Other Specifications/Notes	Material width: 6 - 8mm, 40mm internal lip return with internal vertical return, horizontal internal support ribs. Detailed drawings can be supplied

IGNP014T Material: GRP Height: 80mm Weight: 14kg

- These products can include embossing or debossing of logos or other branding information on flat surfaces.
- Various material inlay possibilities are available to enhance the design.
- It is possible to build top hat returns into all pots and planters, please contact us directly to discuss options and pricing.
- Similarly, drainage holes can be added to all items, given your planting requirements; environmental and aesthetic concerns.



PEBBLE RANGE



PEBBLE POT

IGNP015

Material	Glass fibre reinforced polyconcrete
Height	1m
Width	1m
Length	1.5m
Weight	78kg
Other Specifications/Notes	Material width: 6 - 8mm, Internal lip return with internal vertical return, Horizontal internal support ribs. Detailed drawings can be supplied

IGNP015T Material: GRP Height: 80mm Weight: 21kg



POD PLANTER

IGNP016

Material	Glass fibre reinforced polyconcrete
Height	900mm (Highest point) to 621mm
Width	1.6m
Length	1.75m
Weight	62kg
Other Specifications/Notes	Material width: 6 - 8mm, 40mm internal lip return, Horizontal internal support ribs. Detailed drawings can be supplied



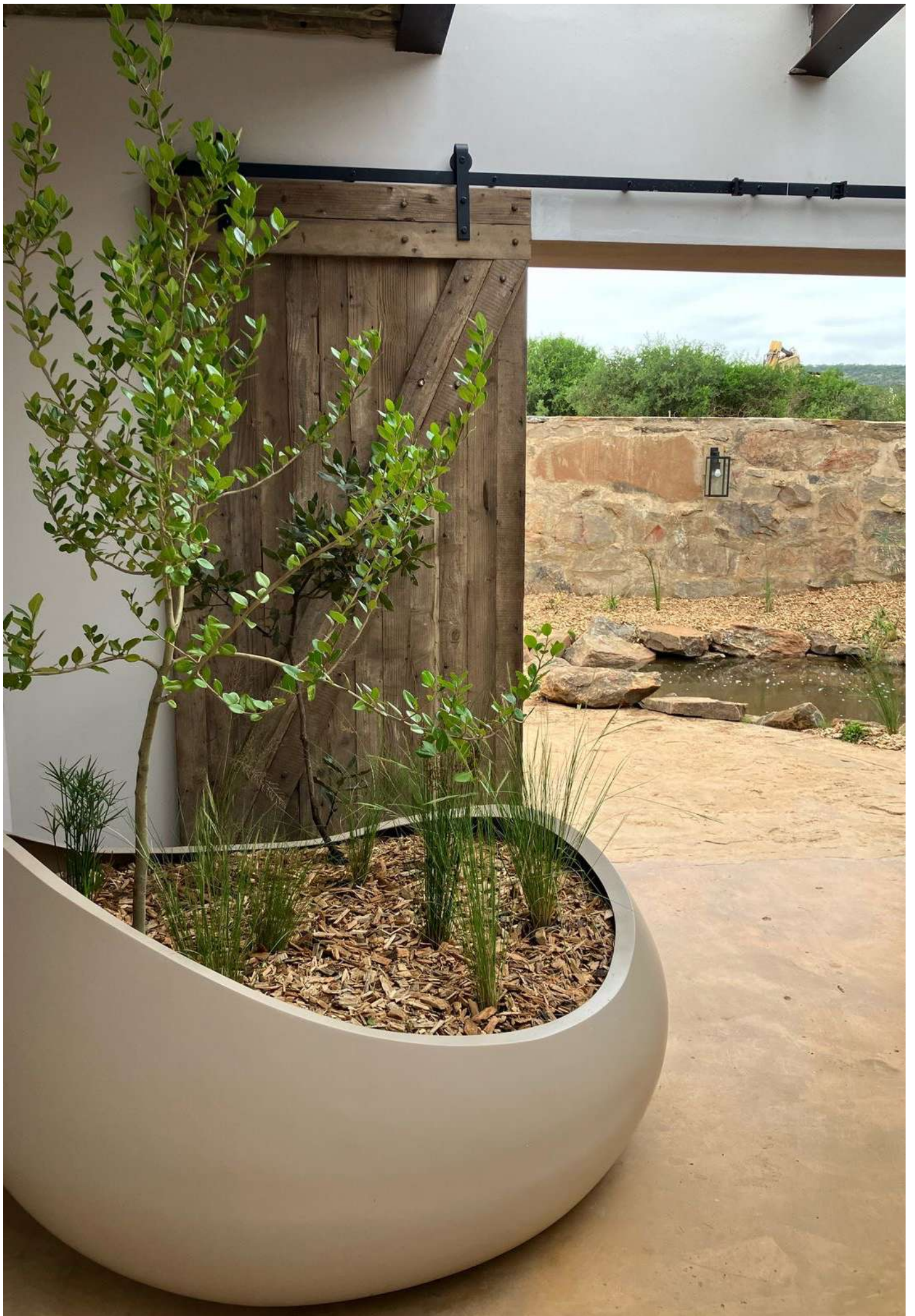
OVAL POT

IGNP018

Material	Glass fibre reinforced polyconcrete
Height	450mm (Including 100mm high recessed base)
Width	450mm
Length	1.25m
Weight	24kg
Other Specifications/Notes	Material width: 6 - 8mm, 40mm internal lip return, Horizontal internal support ribs. Detailed drawings can be supplied

IGNP018T Material: GRP Height: 80mm (20mm gap from side view) Weight: 3kg

- These products can include embossing or debossing of logos or other branding information on flat surfaces.
- Various material inlay possibilities are available to enhance the design.
- It is possible to build top hat returns into all pots and planters, please contact us directly to discuss options and pricing.
- Similarly, drainage holes can be added to all items, given your planting requirements; environmental and aesthetic concerns.



TRIANGULATED POTS



TAPERED SQUARE POT

IGNP007

Material	Polyconcrete
Height	890mm
Top Width	600mm
Bottom Width	400mm
Weight	54kg
Other Specifications/Notes	Material width: 20mm. Detailed drawings can be supplied

IGNP007T Material: GRP Height: 80mm (20mm gap from top view) Weight: 4.2kg



TRIANGULATED POT

IGNP017

Material	Glass fibre reinforced polyconcrete
Height	1.2m (Including 100mm high recessed base)
Width	1.4m
Length	1.5m
Weight	93kg
Available Variations	Possible to provide without a base to allow for in-ground tree planting through planter sleeve
Other Specifications/Notes	Material width: 6 - 8mm, 40mm internal lip return. Detailed drawings can be supplied

IGNP017T Material: GRP Height: 80mm (20mm gap from side view) Weight: 19kg



TRIANGULATED PLANTER

IGNP019

Material	Glass fibre reinforced polyconcrete
Height	750mm (Including 32mm high recessed base)
Width	970mm (at widest), 225mm (at smallest width side)
Length	2.6m (at longest)
Weight	89kg
Available Variations	Possible to provide without a base to allow for in-ground tree planting through planter sleeve
Other Specifications/Notes	Detailed drawings can be supplied. Note no drip tray.

CIRCULAR POTS



STANDARD OFF-ROUND POT

IGNP001

Material	Polyconcrete
Height	1.1m (with base), 1m (without base)
Top Diameter	750mm
Bottom Diameter	450mm
Weight	55kg (with base), 52kg (without base)
Available Variations	Any pot height between 500mm and 1m from the base up
Other Specifications/Notes	Material width: 20mm. Detailed drawings can be supplied

IGNP001T **Material:** GRP **Height:** 80mm - 20mm gap from side view (with base), 20mm gap from top view (without base) **Weight:** 4kg



1.5M DIAMETER OFF-ROUND POT

IGNP004

Material	Glass fibre reinforced polyconcrete
Height	1.3m (Including 100mm for recessed base)
Top Diameter	1.5m
Bottom Diameter	Tapers from top with 7° gradient to base
Weight	75kg
Other Specifications/Notes	Material width: 6 - 8mm, 40mm internal lip return with 100mm drop down, Horizontal internal support ribs. Detailed drawings can be supplied

IGNP004T **Material:** GRP **Height:** 80mm (20mm gap from side view) **Weight:** 21kg



SUGARBOWL

IGNP003

Material	Glass fibre reinforced polyconcrete
Height	840mm
Top Diameter	1.7m
Bottom Diameter	800mm
Weight	60kg
Other Specifications/Notes	Material width: 6 - 8mm, 40mm internal lip return, Horizontal internal support ribs. Detailed drawings can be supplied

IGNP003T **Material:** GRP **Height:** 70mm **Weight:** 6kg

- These products can include embossing or debossing of logos or other branding information on flat surfaces.
- Various material inlay possibilities are available to enhance the design.
- It is possible to build top hat returns into all pots and planters, please contact us directly to discuss options and pricing.
- Similarly, drainage holes can be added to all items, given your planting requirements; environmental and aesthetic concerns.

CIRCULAR POTS



SUGARBOWL (A)

IGNP024

Material	Glass fibre reinforced polyconcrete
Height	1m (including 100mm high recessed base)
Top Diameter	1.2m
Length	800mm
Other Specifications/Notes	Material Width: 6-8mm, 40mm internal lip return, Horizontal internal support ribs. Detailed drawings can be supplied

IGNP024T Material: GRP Height: 80mm



SUGARBOWL (B)

IGNP025

Material	Glass fibre reinforced polyconcrete
Height	1m (including 100mm high recessed base)
Top Diameter	1m
Length	670mm
Other Specifications/Notes	Material Width: 6-8mm, 40mm internal lip return, Horizontal internal support ribs. Detailed drawings can be supplied

IGNP024T Material: GRP Height: 80mm



- These products can include embossing or debossing of logos or other branding information on flat surfaces.
- Various material inlay possibilities are available to enhance the design.
- It is possible to build top hat returns into all pots and planters, please contact us directly to discuss options and pricing.
- Similarly, drainage holes can be added to all items, given your planting requirements; environmental and aesthetic concerns.

CIRCULAR POTS

Applies to all IGNP002 variations below

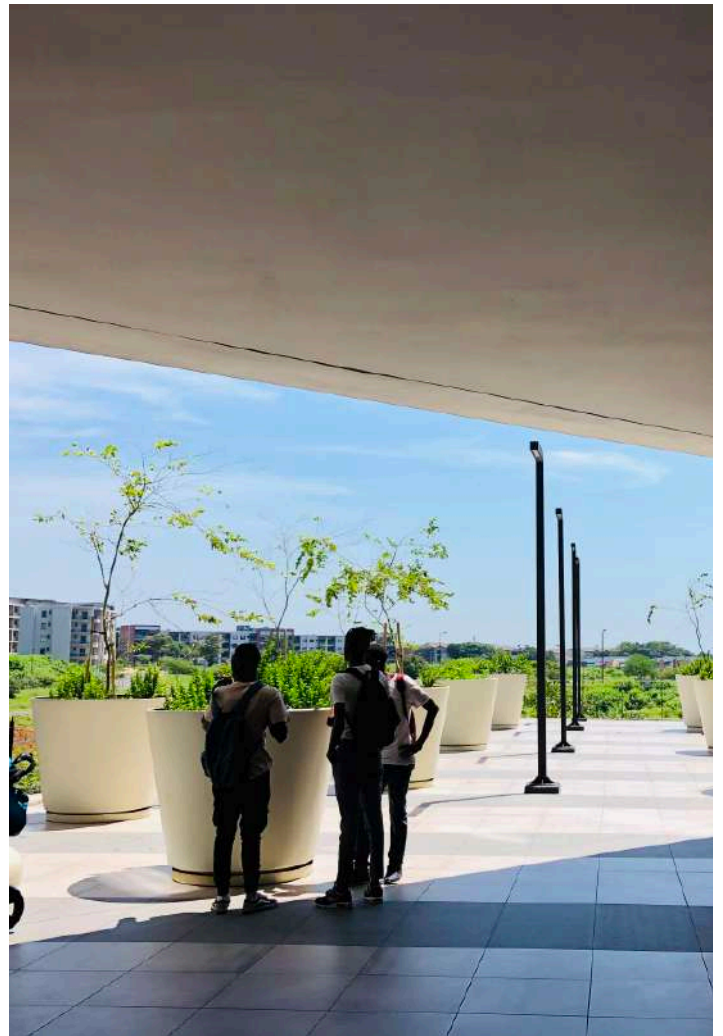
IGNP002T	Material: GRP Height: 80mm - 20mm gap from side view (with base), 20mm gap from top view (without base) Weight: 21.6kg
----------	--

1.5M DIAMETER POT (300mm HIGH)	IGNP002A
Material	Glass fibre reinforced polyconcrete
Height	400mm (with base), 300mm (without base)
Top Diameter	1.5m
Bottom Diameter	1.45m
Weight	50.5kg (with base), 45kg (without base)
Other Specifications/Notes	Material width: 6 - 8mm, 40mm internal lip return, Horizontal internal support ribs. Detailed drawings can be supplied

1.5M DIAMETER POT (800mm HIGH)	IGNP002B
Material	Glass fibre reinforced polyconcrete
Height	900mm (with base), 800mm (without base)
Top Diameter	1.5m
Bottom Diameter	1.45m
Weight	75.5kg (with base), 70kg (without base)
Other Specifications/Notes	Material width: 6 - 8mm, 40mm internal lip return, Horizontal internal support ribs. Detailed drawings can be supplied

1.5M DIAMETER POT (1.2m HIGH)	IGNP002C
Material	Glass fibre reinforced polyconcrete
Height	1.3m (with base), 1.2m (without base)
Top Diameter	1.5m
Bottom Diameter	1.45m
Weight	90.5kg (with base), 85kg (without base)
Other Specifications/Notes	Material width: 6 - 8mm, 40mm internal lip return, Horizontal internal support ribs. Detailed drawings can be supplied

- These products can include embossing or debossing of logos or other branding information on flat surfaces.
- Various material inlay possibilities are available to enhance the design.
- It is possible to build top hat returns into all pots and planters, please contact us directly to discuss options and pricing.
- Similarly, drainage holes can be added to all items, given your planting requirements; environmental and aesthetic concerns.



CIRCULAR POTS



CYLINDRICAL POT (A)

IGNP009

Material	Glass fibre reinforced polyconcrete
Height	900mm (with base), 800mm (without base)
Diameter	1m
Weight	39kg (with base), 28kg (without base)
Available Variations	Possible to provide without a base to allow for in-ground tree planting through planter sleeve
Other Specifications/Notes	Material width: 6 - 8mm, 40mm internal lip return, Horizontal internal support ribs. Detailed drawings can be supplied

IGNP009T Material: GRP Height: 80mm - 20mm gap from side view (with base), 20mm gap from top view (without base) Weight: 11kg



CYLINDRICAL POT (B)

IGNP010

Material	Glass fibre reinforced polyconcrete
Height	1.1m (with base); 1m (without base)
Diameter	800mm
Weight	37kg (with base), 29kg (without base)
Other Specifications/Notes	Material width: 6 - 8mm, 40mm internal lip return, Horizontal internal support ribs. Detailed drawings can be supplied

IGNP010T Material: GRP Height: 80mm - 20mm gap from side view (with base), 20mm gap from top view (without base) Weight: 8kg



CYLINDRICAL POT (C)

IGNP011

Material	Glass fibre reinforced polyconcrete
Height	1.3m (with base), 1.2m (without base)
Diameter	600mm
Weight	33kg (with base), 27kg (without base)
Other Specifications/Notes	Material width: 6 - 8mm, 40mm internal lip return, Horizontal internal support ribs. Detailed drawings can be supplied

IGNP011T Material: GRP Height: 80mm - 20mm gap from side view (with base), 20mm gap from top view (without base) Weight: 6kg

- These products can include embossing or debossing of logos or other branding information on flat surfaces.
- Various material inlay possibilities are available to enhance the design.
- It is possible to build top hat returns into all pots and planters, please contact us directly to discuss options and pricing.
- Similarly, drainage holes can be added to all items, given your planting requirements; environmental and aesthetic concerns.

CIRCULAR POTS



CYLINDRICAL POT (D)

IGNP020

Material	Glass fibre reinforced polyconcrete
Height	1m (without recessed base)
Diameter	400mm
Weight	22kg
Other Specifications/Notes	Material width: 6 - 8mm, 40mm internal lip return, Horizontal internal support ribs. Detailed drawings can be supplied

IGNP020T Material: GRP Height: 80mm - 20mm gap from top view Weight: 2kg



CYLINDRICAL COLLARED PLANTER

IGNP023

Material	Glass fibre reinforced polyconcrete
Height	1.1m (including 100mm highy recessed base)
Diameter	800mm, collar diameter increases to 860mm – 250mm down from internal lip return.
Weight	38kg
Other Specifications/Notes	Material width: 6 - 8mm, 40mm internal lip return, Horizontal internal support ribs. Detailed drawings can be supplied

IGNP010T Material: GRP Height: 80mm - 20mm gap from top view Weight: 8kg



- These products can include embossing or debossing of logos or other branding information on flat surfaces.
- Various material inlay possibilities are available to enhance the design.
- It is possible to build top hat returns into all pots and planters, please contact us directly to discuss options and pricing.
- Similarly, drainage holes can be added to all items, given your planting requirements; environmental and aesthetic concerns.

ELLIPTICAL POTS



SEMI-ELLIPTICAL POT (SMALL)

IGNP005

Material	Glass fibre reinforced polyconcrete
Height	900mm (Including 100mm high recessed base)
Width	1.7m
Inner Radius/Diameter	440mm / 880mm (If two halves placed together)
Length	1.1m
Weight	68kg
Other Specifications/Notes	Material width: 6 - 8mm, 40mm internal lip return, Horizontal internal support ribs. Detailed drawings can be supplied

IGNP005T Material: GRP Height: 80mm (20mm gap from side view) Weight: 23kg



SEMI-ELLIPTICAL POT (LARGE)

IGNP006

Material	Glass fibre reinforced polyconcrete
Height	900mm (Including 100mm high recessed base)
Width	1.7m
Inner Radius/Diameter	440mm / 880mm (If two halves placed together)
Length	1.7m
Weight	74kg
Other Specifications/Notes	Material width: 6 - 8mm, 40mm internal lip return, Horizontal internal support ribs. Detailed drawings can be supplied

IGNP006T Material: GRP Height: 80mm (20mm gap from side view) Weight: 25kg



QUARTER SECTION POT

IGNP008

Material	Glass fibre reinforced polyconcrete
Height	850mm (Including 100mm high recessed base)
Width	1.5m (Width of two faces)
Diagonal Face Radius	1.5m
Weight	58kg
Other Specifications/Notes	Material width: 6 - 8mm, 40mm internal lip return, Horizontal internal ribs. Detailed drawings can be supplied

IGNP008T Material: GRP Height: 80mm (20mm gap from side view) Weight: 18kg

- These products can include embossing or debossing of logos or other branding information on flat surfaces.
- Various material inlay possibilities are available to enhance the design.
- It is possible to build top hat returns into all pots and planters, please contact us directly to discuss options and pricing.
- Similarly, drainage holes can be added to all items, given your planting requirements; environmental and aesthetic concerns.



SQUARE PLANTERS



1.2M SQUARE PLANTER (750mm HIGH)

IGNP-SQ-001

Material	Glass fibre reinforced polyconcrete
Height	750mm (Including 100mm high recessed base)
Width	1.2m (top), 1.1m (bottom)
Weight	62kg
Available Variations	Possible to provide without a base to allow for in-ground tree planting through planter sleeve
Other Specifications/Notes	Material width: 6 - 8mm, 40mm internal lip return, Horizontal internal ribs. Detailed drawings can be supplied



IGNP-SQ-001T Material: GRP Height: 80mm (20mm gap from side view) Weight: 11kg

1.2M SQUARE PLANTER (900mm HIGH)

IGNP-SQ-002

Material	Glass fibre reinforced polyconcrete
Height	900mm (Including 100mm high recessed base)
Width	1.2m (top), 1.1m (bottom)
Weight	73kg
Available Variations	Possible to provide without a base to allow for in-ground tree planting through planter sleeve
Other Specifications/Notes	Material width: 6 - 8mm, 40mm internal lip return, Horizontal internal ribs. Detailed drawings can be supplied



IGNP-SQ-002T Material: GRP Height: 80mm (20mm gap from side view) Weight: 11kg

- These products can include embossing or debossing of logos or other branding information on flat surfaces.
- Various material inlay possibilities are available to enhance the design.
- It is possible to build top hat returns into all pots and planters, please contact us directly to discuss options and pricing.
- Similarly, drainage holes can be added to all items, given your planting requirements; environmental and aesthetic concerns.

SQUARE PLANTERS



1.2M SQUARE PLANTER (1.1m HIGH)

IGNP-SQ-005

Material	Glass fibre reinforced polyconcrete
Height	1.1m (Including 100mm high recessed base)
Width	1.2m (top), 1.1m (bottom)
Weight	89kg
Available Variations	Possible to provide without a base to allow for in-ground tree planting through planter sleeve
Other Specifications/Notes	Material width: 6 - 8mm, 40mm internal lip return, Horizontal internal ribs. Detailed drawings can be supplied

IGNP-SQ-005T Material: GRP Height: 80mm (20mm gap from side view) Weight: 15kg



700MM SQUARE PLANTER (1m HIGH)

IGNP-SQ-003

Material	Glass fibre reinforced polyconcrete
Height	1m (Including 100mm high recessed base)
Width	700mm
Weight	36kg
Other Specifications/Notes	Material width: 6 - 8mm, 40mm internal lip return, Horizontal internal ribs. Detailed drawings can be supplied

IGNP-SQ-003T Material: GRP Height: 80mm (20mm gap from side view) Weight: 5kg



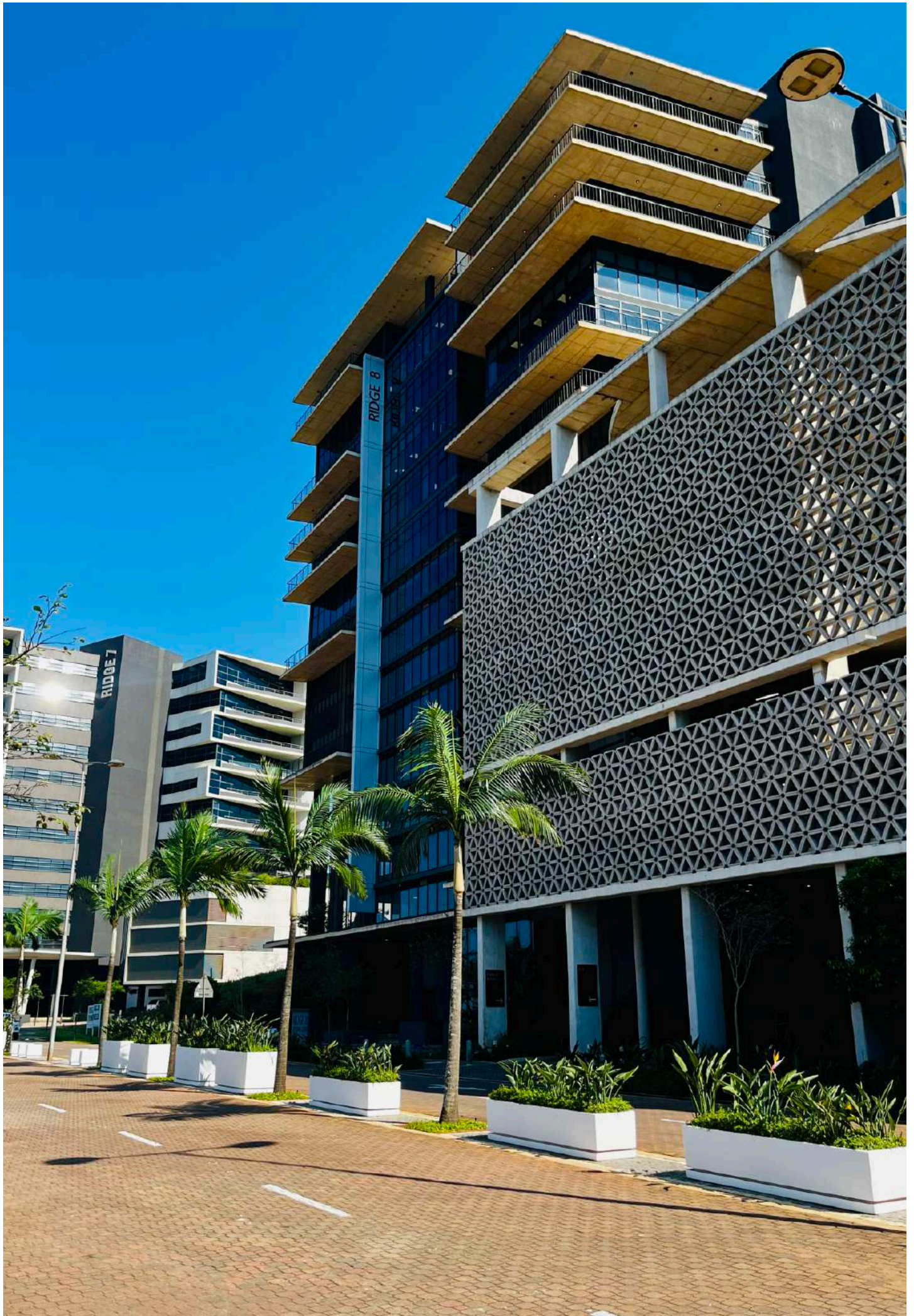
700MM SQUARE PLANTER (550mm HIGH)

IGNP-SQ-004

Material	Glass fibre reinforced polyconcrete
Height	550mm (Including 100mm high recessed base)
Width	700mm
Weight	28kg
Other Specifications/Notes	Material width: 6 - 8mm, 40mm internal lip return, Horizontal internal ribs. Detailed drawings can be supplied

IGNP-SQ-004T Material: GRP Height: 80mm (20mm gap from side view) Weight: 5kg

- These products can include embossing or debossing of logos or other branding information on flat surfaces.
- Various material inlay possibilities are available to enhance the design.
- It is possible to build top hat returns into all pots and planters, please contact us directly to discuss options and pricing.
- Similarly, drainage holes can be added to all items, given your planting requirements; environmental and aesthetic concerns.



RECTANGULAR PLANTERS



RECTANGULAR TROUGH PLANTER

IGNP-REC-006

Material	Glass fibre reinforced polyconcrete
Height	800mm (Including 100mm high recessed base)
Width	750mm
Length	1.75m
Weight	60kg
Other Specifications/Notes	Material width: 6 - 8mm, 40mm internal lip return, Horizontal internal ribs. Detailed drawings can be supplied

IGNP-REC-006T Material: GRP Height: 80mm (20mm gap from side view) Weight: 20kg



RECTANGULAR TROUGH PLANTER

IGNP-REC-017

Material	Glass fibre reinforced polyconcrete
Height	850mm (Including 100mm high recessed base)
Width	1m
Length	1.5m
Weight	69kg
Other Specifications/Notes	Material width: 6 - 8mm, 40mm internal lip return, Horizontal internal ribs. Detailed drawings can be supplied

IGNP-REC-017T Material: GRP Height: 80mm (20mm gap from side view) Weight: 24kg



RECTANGULAR TROUGH PLANTER

IGNP-REC-003

Material	Glass fibre reinforced polyconcrete
Height	900mm (Including 100mm high recessed base)
Width	550mm
Length	700mm
Weight	35kg
Other Specifications/Notes	Material width: 6-8mm, 40mm internal lip return, Horizontal internal ribs. Detailed drawings can be supplied.

IGNP-REC-003T Material: GRP Height: 80mm (20mm gap from side view) Weight: 8kg

- These products can include embossing or debossing of logos or other branding information on flat surfaces.
- Various material inlay possibilities are available to enhance the design.
- It is possible to build top hat returns into all pots and planters, please contact us directly to discuss options and pricing.
- Similarly, drainage holes can be added to all items, given your planting requirements; environmental and aesthetic concerns.

RECTANGULAR PLANTERS



RECTANGULAR TROUGH PLANTER

IGNP-REC-011

Material	Glass fibre reinforced polyconcrete
Height	900mm (Including 100mm high recessed base)
Width	750mm
Length	1.2m
Weight	62kg
Other Specifications/Notes	Material width: 6 - 8mm, 50mm internal lip return, Horizontal internal ribs. Detailed drawings can be supplied

IGNP-REC-011T Material: GRP Height: 80mm (20mm gap from side view) Weight: 9kg



RECTANGULAR TROUGH PLANTER

IGNP-REC-002

Material	Glass fibre reinforced polyconcrete
Height	550mm (Including 100mm high recessed base)
Width	550mm
Length	900mm
Weight	28kg
Other Specifications/Notes	Material width: 6 - 8mm, 40mm internal lip return, Horizontal internal ribs. Detailed drawings can be supplied

IGNP-REC-002T Material: GRP Height: 80mm (20mm gap from side view) Weight: 6kg



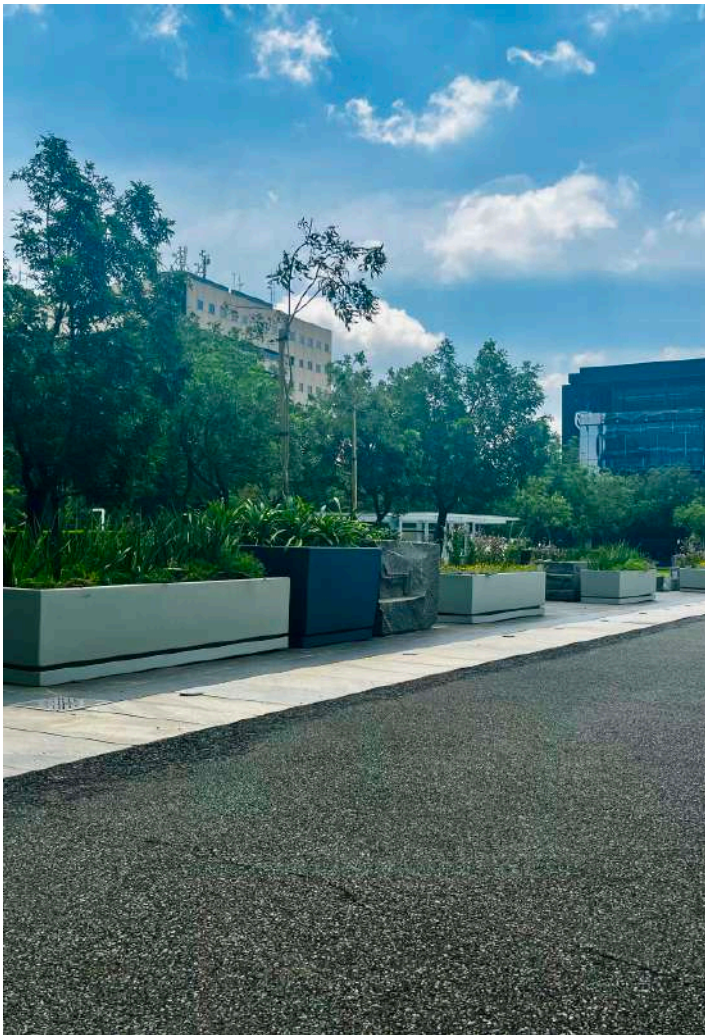
RECTANGULAR TROUGH PLANTER

IGNP-REC-009

Material	Glass fibre reinforced polyconcrete
Height	450mm (Including 100mm high recessed base)
Width	400mm
Length	1.25m
Weight	28kg
Other Specifications/Notes	Material width: 6 - 8mm, 40mm internal lip return, Horizontal internal ribs. Detailed drawings can be supplied

IGNP-REC-009T Material: GRP Height: 80mm (20mm gap from side view) Weight: 5.5kg

- These products can include embossing or debossing of logos or other branding information on flat surfaces.
- Various material inlay possibilities are available to enhance the design.
- It is possible to build top hat returns into all pots and planters, please contact us directly to discuss options and pricing.
- Similarly, drainage holes can be added to all items, given your planting requirements; environmental and aesthetic concerns.



RECTANGULAR PLANTERS



RECTANGULAR TROUGH PLANTER

IGNP-REC-014

Material	Glass fibre reinforced polyconcrete
Height	450mm (Including 100mm high recessed base)
Width	800mm
Length	1.6m
Weight	33kg
Other Specifications/Notes	Material width: 6 - 8mm, 40mm internal lip return, Horizontal internal ribs. Detailed drawings can be supplied

IGNP-REC-014T Material: GRP Height: 80mm (20mm gap from side view) Weight: 18kg



RECTANGULAR TROUGH PLANTER

IGNP-REC-004

Material	Glass fibre reinforced polyconcrete
Height	350mm (Including 100mm high recessed base)
Width	390mm
Length	2m
Weight	45kg
Other Specifications/Notes	Material width: 6 - 8mm, 40mm internal lip return, Horizontal internal ribs. Detailed drawings can be supplied

IGNP-REC-004T Material: GRP Height: 80mm (20mm gap from side view) Weight: 18kg



RECTANGULAR TROUGH PLANTER

IGNP-REC-019

Material	Glass fibre reinforced polyconcrete
Height	500mm (Including 100mm high recessed base)
Width	600mm
Length	2.4m
Weight	78kg
Other Specifications/Notes	Material width: 6 - 8mm, 40mm internal lip return, Horizontal internal ribs. Detailed drawings can be supplied

IGNP-REC-019T Material: GRP Height: 80mm (20mm gap from side view) Weight: 17kg

- These products can include embossing or debossing of logos or other branding information on flat surfaces.
- Various material inlay possibilities are available to enhance the design.
- It is possible to build top hat returns into all pots and planters, please contact us directly to discuss options and pricing.
- Similarly, drainage holes can be added to all items, given your planting requirements; environmental and aesthetic concerns.

ARC-COMBINATION PLANTERS



ARC PLANTER

IGNP022

Material	Glass fibre reinforced polyconcrete
Height	800mm (with 100mm high recessed base)
Width	500mm
Length	1.3m
Weight	76kg
Available Variations	
Other Specifications/Notes	Material width: 6-8mm, 40mm internal lip return, Horizontal internal support ribs. Designed to fit with IGNF059 -Arc Bench. Detailed drawings can be supplied

IGNP022T Material: GRP Height: 80mm (20mm gap from side view) Weight: 18kg



MODULAR PLANTER

IGNX028

Material	Glass fibre reinforced polyconcrete
Height	500mm
Width	1m (Plus 150mm extension to join pieces)
Length	1m (Plus 150mm extension to join pieces)
Available Variations	Possible to provide without a base to allow for in-ground tree planting through planter sleeve
Other Specifications/Notes	Detailed drawings can be supplied. Material thickness 6-8mm, with 40mm internal lip return. Drip tray optional

IGNX028T Material: GRP Height: 80mm (20mm gap from side view) Weight: -



PENTAGONAL PLANTER

IGNP021

Material	Glass fibre reinforced polyconcrete
Height	500mm
Width	920mm (each side panel is 600mm wide)
Length	970mm
Weight	33kg
Available Variations	Possible to provide without a base to allow for in-ground tree planting through planter sleeve
Other Specifications/Notes	Detailed drawings can be supplied. Material thickness 6-8mm with 40mm internal lip return.

IGNP021T Material: GRP Height: 30mm (20mm gap from side view) Weight: 3kg

- These products can include embossing or debossing of logos or other branding information on flat surfaces.
- Various material inlay possibilities are available to enhance the design.
- It is possible to build top hat returns into all pots and planters, please contact us directly to discuss options and pricing.
- Similarly, drainage holes can be added to all items, given your planting requirements; environmental and aesthetic concerns.

OVER-SIZED PLANTERS



RECTANGULAR TROUGH PLANTER

IGNP-REC-010

Material	Glass fibre reinforced polyconcrete
Height	1.2m (Including 100mm high recessed base)
Width	1.2m
Length	2.4m
Weight	170kg
Other Specifications/Notes	Material width: 6 - 8mm, 60mm internal lip return, Horizontal internal ribs. Detailed drawings can be supplied

IGNP-REC-010T Material: GRP Height: 80mm (20mm gap from side view) Weight: 38kg

RECTANGULAR TROUGH PLANTER (4m)

IGNX023

Material	Glass fibre reinforced polyconcrete
Height	500mm (Includes 100mm high recessed base height)
Width	500mm
Length	4m
Weight	-
Other Specifications/Notes	Material width: 6-8mm, 40mm internal lip return, Horizontal internal ribs. Detailed drawings can be supplied

IGNX023T Material: GRP Height: 80mm (20mm gap from side view) Weight: -

SQUARE PLANTER (2.5m)

IGNX022

Material	Glass fibre reinforced polyconcrete
Height	640mm (including 100mm high recessed base)
Width	2.5m
Length	2.5m
Weight	135kg
Other Specifications/Notes	Material width: 6-8mm, 40mm internal lip return, Horizontal internal ribs. Detailed drawings can be supplied

IGNX022T Material: GRP Height: 80mm (20mm gap from side view) Weight: -

- These products can include embossing or debossing of logos or other branding information on flat surfaces.
- Various material inlay possibilities are available to enhance the design.
- It is possible to build top hat returns into all pots and planters, please contact us directly to discuss options and pricing.
- Similarly, drainage holes can be added to all items, given your planting requirements; environmental and aesthetic concerns.