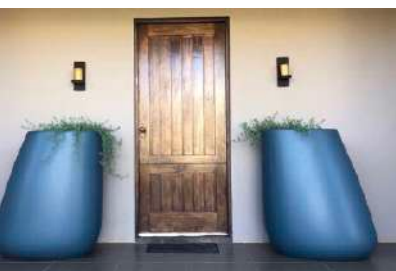


---

# PRODUCT CATALOGUE 2025

---

Innovators in all weather, lightweight polyconcrete





---

# CATALOGUE INDEX

<b>WHO WE ARE</b>	2
<b>OUR EVOLUTION</b>	3
<b>WHAT WE DO</b>	4
<b>COLOUR PALETTE</b>	4
<b>MATERIAL OVERVIEW</b>	5
<b>CUSTOM DESIGN</b>	6
<b>CNC ROUTER MACHINE</b>	7
<b>MIXED MEDIA</b>	8
<b>SILICA POLYCONCRETE</b>	9
<b>BRANDING</b>	10
<b>DELIVERY, PLACEMENT, INSTALLATION + REFURBISHMENT SERVICE</b>	11
<b>INDUSTRIAL + AGRICULTURAL APPLICATIONS</b>	12
<b>SEATING AND FURNITURE</b>	13
ADAPTIONS	14
PEBBLE RANGE	15
ORGANIC RANGE	20
ULTERIOR RANGE	23
RECTANGULAR RANGE	26
GEOMETRIC RANGE	30
ABSTRACT RANGE	33
ARC COMBINATIONS	40
PLANTER-BENCH RANGE	47
LONG LENGTH FIXED BENCH STRUCTURES	50
<b>POTS AND PLANTERS</b>	51
POT VARIATIONS	52
PEBBLE RANGE	53
TRIANGULATED POTS	57
CIRCULAR POTS	58
ELLIPTICAL POTS	64
SQUARE PLANTERS	66
RECTANGULAR PLANTERS	69
ARC-COMBINATION PLANTERS	73
OVER-SIZED PLANTERS	74
<b>PUBLIC SPACE INSTALLATIONS</b>	75
BOLLARDS	76
BINS	80
COUNTER FRONTS, CANOPIES AND SIGNAGE	83
<b>PANELING APPLICATIONS</b>	85

---

## WHO WE ARE

Igneous is a specialist manufacturer and supplier of resin based polyconcrete installations for the commercial, retail, leisure and public space industries, complimenting architectural and landscaping projects in South Africa and abroad. We have an extensive range of pots and planters; seating and furniture; bins, bollards, counter front, canopies and signage; as well as wall and bench paneling.



We are very proud of the fact that all our mould design and production, and our manufacturing are hand crafted by South African up-skilled artisans. Under the direction of Brent Youens and professional expertise of Claude van Rooyen, an intuitive, formidable man of some 50 years experience in the pattern making industry, Igneous has enjoyed product integrity and consistency. Over time, we have also trained and accredited an apprentice pattern maker; specialist spray painters (who apply our final finish and outer sealant) and specialist laminators for both the mould development and production processes. Our production facility outside Durban is now efficiently led by Kelvin Pillay, ensuring high quality end product and firm completion to time lines.

Igneous has also developed a reputation for excellent customer service and after sales care. We are known for meeting deadlines, attending to any problems or issues timeously and effectively, taking great care in detail and generally adapting to meet a client's need.

Our in-house experience also extends from our sister company JNM Construction, owned by brothers Brent and Oliver Youens, both civil engineers with over 20 years experience in engineering and contracting. We have first-hand, day-to-day understanding of the rigours of the construction environment and therefore highly respect the nature of the work and its constraints.

---

# OUR EVOLUTION

We have worked in the South African architectural, interiors and landscaping industries since 2008, after developing this durable, all weather and design-forward material. Our first products were of in-house design and looked to cater to high-end households, especially at the coast, given the weather's impact on outdoor furniture. We quickly learned however, through generous support and insight from our initial architectural and landscaping contacts, that there was greater potential at the time in the commercial and retail sectors.

In 2009, we were awarded the outdoor seating and public space installations for the Moses Mabhida Stadium (Durban) in preparation for the 2010 FIFA Soccer World Cup. We have not looked back since, having our product listing grow only by custom-design to over a hundred products and the following stand out projects, amongst many others:

**RETAIL** – Morning Glen Shopping Centre, Ferndale Mall, Witbank Safeways Crossing Mall, Grenada Square, Central Park Shopping Centre, Walmer Park Shopping Centre, Milnerton Mall, Benmore Gardens, Queenswood Corner Shopping Centre, Diepsloot Mall, Ballito Junction, Sandton City, Table Bay Mall, Blue Route Shopping Centre, Centre Point Shopping Centre, Boitumelo Junction, Key West Shopping Centre, Secunda Mall, Southview Centre, Vaal Mall, I'Langa Mall, Mall of Africa, Soshanguve Crossing, Canal Walk Shopping Centre, Dainfern Square, Goldfields Mall, Newtown Junction, Waterfall Corner, Cornubia Mall, Cradlestone Mall, Eyethu Mall, Highveld Mall, Whale Coast Mall, Riverside Mall, Mall of the South, Maponya Mall, Matlosana Mall, Nicolway Shopping Centre, Rustenburg Mall, Thlabane Mall, Boardwalk Sheds Shopping Centre, Rosebank Mall, Oceans Mall, Boardwalk Mall, Pan Africa Shopping Centre.

**COMMERCIAL** - we are proudly involved in many of the newly iconic buildings in the expansion and re-design of Sandton and Rosebank including Discovery Health, Webber Wentzel, Sasol Head Office, Oxford Parks, Oxglen Phase 2, Park Central, Alice Lane Towers and Precinct, Growthpoint Properties, 16 Fredman Drive, 2 Pybus Road, Citi Bank, 3 and 6 Sandown Valley Crescent, 4 Protea Place, 61 Katherine Street, 66 Grayston Drive, World Trade Centre, ENS Africa - The Marc, CellC; installations for the offices and office parks of Ad-Corp, Exxaro, Sintelum, MTN - Innovation Campus, FNB - Urban Savannah, Bridgestone, Oracle, BMW, PwC Tower, ABSA, Abinbev, Ackermans, Belgotex, OR Tambo International Airport, Standard Bank Rosebank, FNB Bank City, General Electric, Bateman, Gijima Office Park, Westend Office Park, Hertford Office Park, Nicol on Main, Menlyn Learning Hub, Bryanston Office Park, Byles Bridge Office Park, Nicolway Office Park, Riverwalk Office Park; as well as Umhlanga Arches, Dube Aerotropolis, Park Square, Pran Boulevard, Ridgeside Office Park, ICC Offices in the expansion of Umhlanga and Ballito in KwaZulu-Natal and the Observatory Forensic Pathology Laboratory in Cape Town.

As our product is water repellant and relatively easy to clean and maintain, various seating options have been specified for a number of Planet Fitness and Virgin Active gyms throughout Gauteng and various parts of South Africa. Our benches are used variously in the changing areas and alongside their swimming pools, the polyconcrete being chlorine resistant. We have a similar partnership with the MediClinic service, with various bench and planter options regularly ordered for their many branches throughout the country.

**LEISURE** - we have seen an exciting increase in orders for private homes, boutique leisure options and hotel chains. These include homes in Higgovale, Llandudno and Clifton in Cape Town; Stellenbosch, Hermanus, Melkbosstrand, Plettenburg Bay; Garlington Estate, Umhlanga, Simbithi, Brettenwood and Dunkirk Estate; Monaghan Farm and Serengeti Estates. Boutique offerings include Le Gratitude Herehuis, Vallee Lustre and Wechmarshof Lemoenkloof Road, Hazendal Wine Farm and Peter Falke Wines, Menlyn Main Hotel, Time Square Hotel, One on Whiteley, Central Apartments, Apartments on William. Various installations in the hotel industry include those for the Suncoast Casino, Menlyn Main Hotel, Time Square Hotel and Casino, City Lodge and Town Lodge Square, One & Only Hotel - Cape Town.

**PUBLIC SPACE INSTALLATIONS** - our work in the public sector has extended to various learning centres and tertiary education campuses (University of KwaZulu-Natal Howard Campus, Durban University of Technology, Indumiso Campus, Mangosuthu University of Technology, University of Pretoria, University of Stellenbosch, Pearsons Menlyn Learning Hub, King Lebone Royal College, Johannesburg American International School, Amaoti Library); museums and memorials (Sharpeville Memorial), public transport facilities (Alexandra Non-Motorised Transport Hub, Bridge City Station, Maguag Intermodal Transport Facility); and open areas (Point Promenade, Duduza and Zwide Public Swimming Pools, Waterfall City Park, Newcastle Civic Centre, Port Nolloth Community Health Centre, Department of Environment Affairs, Stats SA, Mossel Bay CBD Upgrade, Pietermaritzburg Urban Renewal Project and the Moses Mabhida Soccer Stadium and surrounding Ethekwini Urban Renewal Project (including Anton Lembede road), Sefako Makgatho Health Sciences University, Alberton Netcare Union Hospital, Observatory Forensic Pathology Institute, Red Cross Children's Hospital, Sol Plaatje University.

We have also supplied product for the Sebele Shopping Centre and Fairscape Office Precinct (Gaborone, Botswana), Hilton Garden Inn (Mbabane, Swaziland), Baia Mall (Maputo, Mozambique), the American International School (Lusaka, Tanzania), Singita Faru Faru Lodge (Grumeti Game Reserve, Tanzania), EcoBank (Accra, Ghana) and the Jabal Lake Mall (Abuja, Nigeria), Centerpoint Mixed-Use Development (Mauritius).

---

## WHAT WE DO

- Provide innovative concrete solutions for your requirements, either through our unique polyconcrete or glass fibre reinforced polyconcrete products
- Customise our material and design to match the envisaged architecture, landscaping and branding
- Provide customised colours outside of our 21-colour palette to match your branding
- Deliver mixed media options where required, combining our polyconcrete with stainless steel, various wood finishes and others
- Deliver a superior resin based polyconcrete material that provides longevity, durability, UV stable colouring and low maintenance
- Installation back-up if required
- Manage maintenance contracts

---

## COLOUR PALETTE



Note: due to the many variations of desktop and mobile screen capabilities, as well as variation in print, the colour you see may not be a completely accurate reproduction of the actual product. Please contact us for material colour samples, which can be couriered to you as soon as the service allows.



---

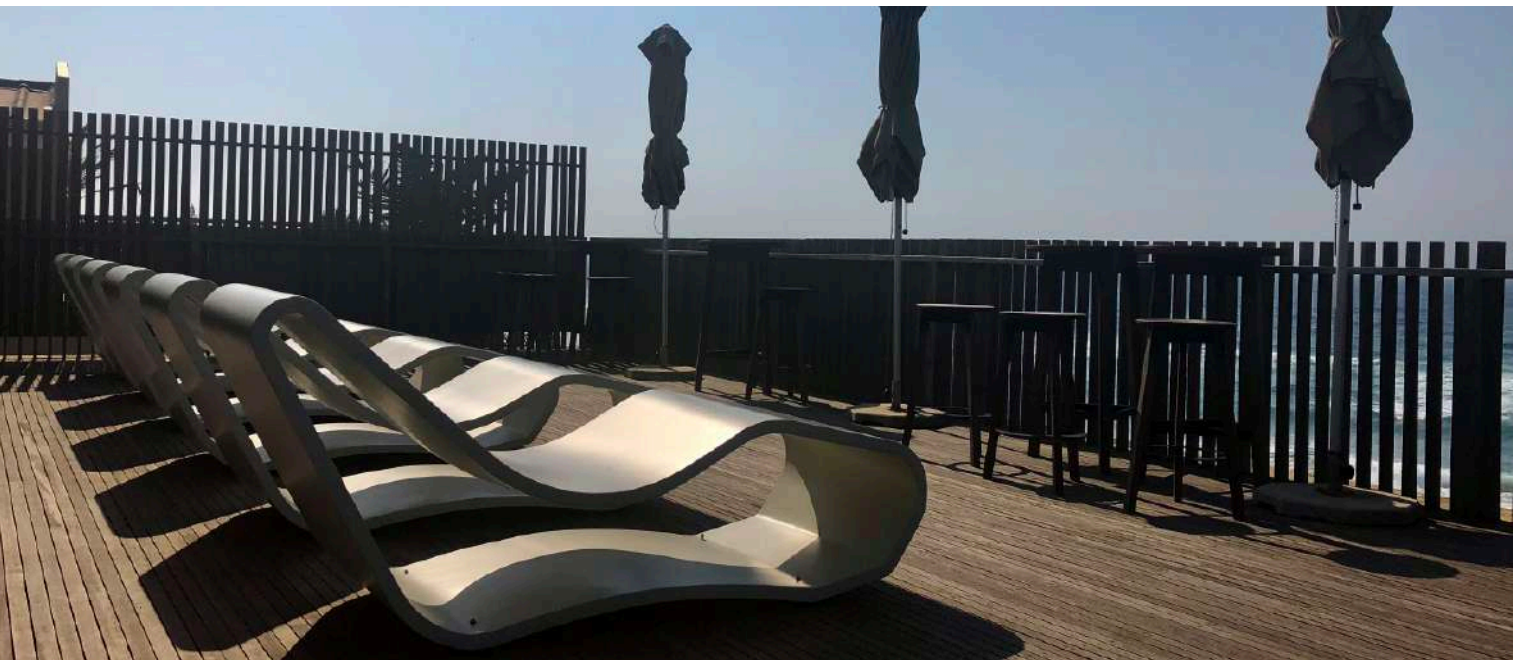
## MATERIAL OVERVIEW

Igneous Polyconcrete is a resin based concrete containing no cement or cementitious elements. Resin is mixed with a variety of fine filling materials and glass fibres, resulting in the polyconcrete. Our product is therefore relatively lightweight, while still remaining highly durable and long lasting. In comparison, a polyconcrete item of the same design, is roughly half the weight of one made from cementitious concrete. The relative light weight provides great logistical and handling advantages, while still retaining heaviness to withstand wind and to make unwanted moving of items more challenging. All our items can be fixed down with bolting structures should movement be of concern.

We offer a 21-colour standard range as well as the option to pigment match the polyconcrete to a colour of your choosing. All items are sealed with a resin based polyester top coat that is a pigment matched to the underlying polyconcrete. The polyconcrete is itself fully pigmented throughout the whole item, reducing the noticeability of small scratches or chips should these occur. The top coat also allows for low maintenance, only generic cleaning products are required.

Igneous polyconcrete is both water repellant and water resistant, as well as resistant to chlorine. The material does not therefore allow for water marks, bubbling, peeling or chalking over time. All our pigments are UV stable.

Igneous also has a glass fibre reinforced polyconcrete option should the design, weight or strength requirements demand it. GRP is also used to reduce the cost of items specified. GRP provides the same smooth, elegant finish while increasing the strength of the design and reducing the material thickness from 20mm to 6-8mm. As such, polyconcrete and GRP items are largely indistinguishable from each other. GRP is largely used for our large-scale and rectangular pots, drip trays, as well as some slim-design furniture options.



---

## CUSTOM DESIGN

Our successes since 2008 have largely depended on our ability and willingness to customise design and scope. As a result, our mould design has increased from 12 in 2010 to over 120 currently, and growing. We provide the opportunity to both push the boundaries of concrete technology, but also provide the basics, especially for the landscaping industry. Much of our growth is therefore both in the manufacture of newly differentiated seating and furniture, and, fit to size, rectangular trough planters and large scale pots using our relatively light weight polyconcrete.

Pricing is determined by the complexity and material used for the mould production as well as the volume of units required. Igneous reserves the right to reproduce items off the mould after initial production.

In order to attain various design and strength requirements we both provide our polyconcrete and glass fibre reinforced polyconcrete options, again fit to purpose for the item. We give consideration to mould design, weight restrictions, material thickness and aesthetic finish amongst other concerns.

In order to provide you with the best possible options we need:

- An image, full description and dimensions for the required installation
- Some detail as to where this installation will be used or placed (especially where this impacts dimensions)
- For pots and planters, we consider additional recessed bases, soil weight and volume, drip trays, drainage holes and elevation from the ground for both aesthetic and further drainage considerations
- For all installations we consider fixing details, both as to whether the item should be fully fixed to the ground or the possibility of removing it (as in the case of removable and fixed bollards, or fixing items to reduce theft, vandalism or movement for weather concerns)
- Whether the item will be subject to high traffic volumes, maintenance issues and various environmental differences (exposure to chlorine or irrigation for example)
- Colour combinations and pigment matching
- Mixed media usage and the inclusion of other materials, for example stainless steel, wood options, recycled composites et cetera
- Finishing requirements, we currently provide our standard sealant finish or a high gloss option
- Any other concerns or requirements

Our factory then requires a 72-hour turn around time to calculate and source material quotes, where required, before we can provide you with a final quote. Lead times are then dependent on the mould production requirements.



Igneous is a client-driven company and as such we are very willing to consider and manufacture customised designs.



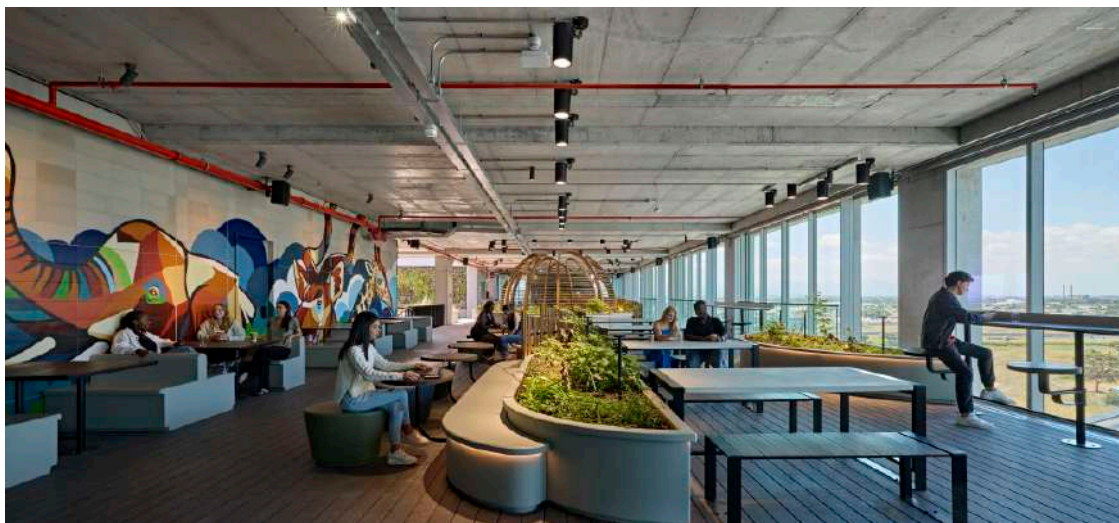
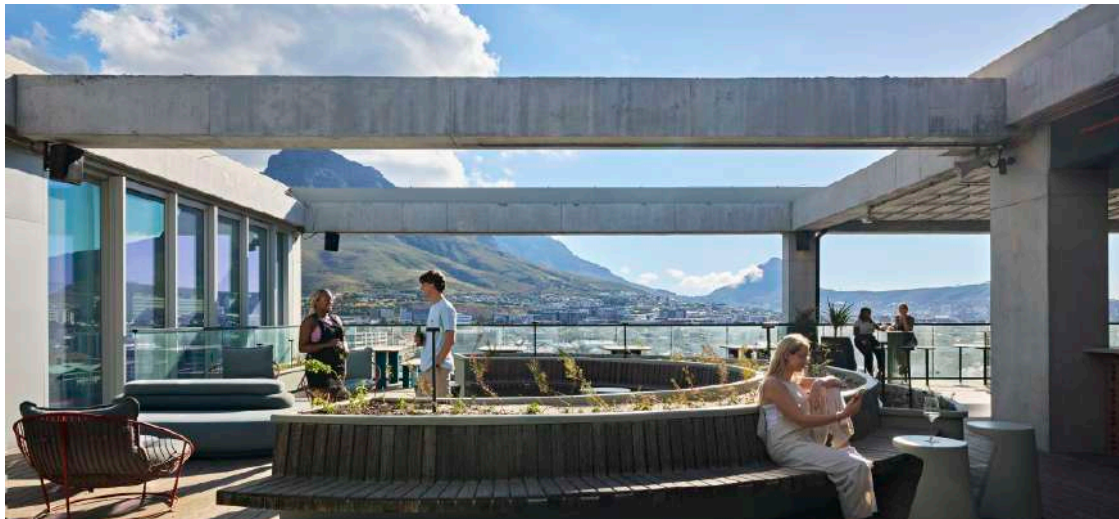
---

# CNC ROUTER MACHINE

As part of our custom manufacturing service, Igneous, now owns a CNC Router Machine with the following capabilities:

- Given the large 4-axis machine, we can manufacture any 2D, 3D and 4D shapes
- The spindle can rotate 0-180 degrees, which allows for arc-surface milling and bending surface machining for 4D items
- A machine working area of 1 500mm x 3 000mm x 1 000mm, with a re-position accuracy of 0.05mm
- Ability and scope to process many materials such as EPS foam, Styrofoam, woods, MDF, composite boards, alucobond, PVC, rigid plastics, polyester, fiberglass, organic glass and aluminium to name a few

This in-house asset allows for extensive customized options and improved timing turn-around on unique items. Please contact us directly for more information, with suggestion and drawings of the work you require.



---

## MIXED MEDIA

Our commitment to custom design and attention to detail has also meant the expansion of the materials we use to provide a finished product, both in its functionality and its full aesthetic.

We have therefore sourced excellent quality materials and artisans or developed our own skills in production, especially in the inclusion of wood and stainless steel inlays and accents:

- We supply steels in both silver stainless steel and gold as shown below
- We have decided on oak for all our standard wood inlays. All our finishes are both resistant to interior and exterior environments
- We can retain the oak as natural, or stain as a standard finish to medium and dark
- We are also able to source other wood varieties including teak, meranti and belleau

We encourage our clients to consider all material possibilities to add to our polyconcrete or glass fibre reinforced polyconcrete in their custom design. Existing designs may also be enhanced to cater for your needs.



Wood W.01  
White



Wood W.02  
Bare



Wood W.03  
Natural



Wood W.04  
Mahogany



Wood W.05  
Dark Mahogany



Wood W.06  
W.01 Dark Brown



Steel S.01  
Gold



Steel S.02  
Silver

Note: due to the many variations of desktop and mobile screen capabilities, as well as variation in print, the colour you see may not be a completely accurate reproduction of the actual product. Please contact us for material colour samples, which can be couriered to you as soon as the service allows.

# SILICA POLYCONCRETE

Igneous SILICA Polyconcrete panels and products are created from mixing a sand composite onto the front face of the mould, with a single colour polyconcrete base and clear epoxy sealant finish.

PANELS – panels are mould formed and not cut-out from an existing slab. The process reduces any waste and allows for your exact dimensions as well as cut-out shapes and logos.

- Panel Size – can be customised up to a maximum size of 2m x 1m
- Panel Thickness – 16mm
- Panel Weight – 35kg per square metre

PRODUCTS – the SILICA application for products is available on a request basis as the vast variety of mould require individual consideration.

Please contact us directly for options and pricing on paneling, standard and custom items.



SIL.01  
White



SIL.02  
Powder Grey



SIL.03  
Bone



SIL.04  
Latte



SIL.05  
Taupe



SIL.06  
Milkwood



SIL.07  
Fjord



SIL.08  
Onyx

Note: due to the many variations of desktop and mobile screen capabilities, as well as variation in print, the colour you see may not be a completely accurate reproduction of the actual product. Please contact us for material colour samples, which can be couriered to you as soon as the service allows.



## BRANDING



Clients can add branding to their installation through embossing and debossing detail, combined with any one of our 21-colour standard palette or custom colours of their choosing. We can emboss (protruding out) or deboss (inlaid) on largely flat surfaces with small modification to the moulding process. Logos, by-lines and information regarding your brand can become a lasting advert on your installation. Contact us directly to discuss the various options and possibilities.

---

## DELIVERY, PLACEMENT, INSTALLATION + REFURBISHMENT SERVICE

Our in-house delivery service extends to most major South African cities and large towns, especially throughout KwaZulu-Natal (given the factory's positioning on the north coast), Gauteng and Cape Town. Where our loads do not allow for delivery or delivery is to more remote areas, we use preferred outsourced service providers. The same is used for cross-border and overseas deliveries, including organization of the correct export paperwork.

Where our own people oversee delivery, we also offer final placement using supplied drawings and onsite supervision; permanent installation and fixing materials and an onsite refurbishment service should significant damage occur. Please contact us directly for costing and possibility.





---

## INDUSTRIAL + AGRICULTURAL APPLICATIONS

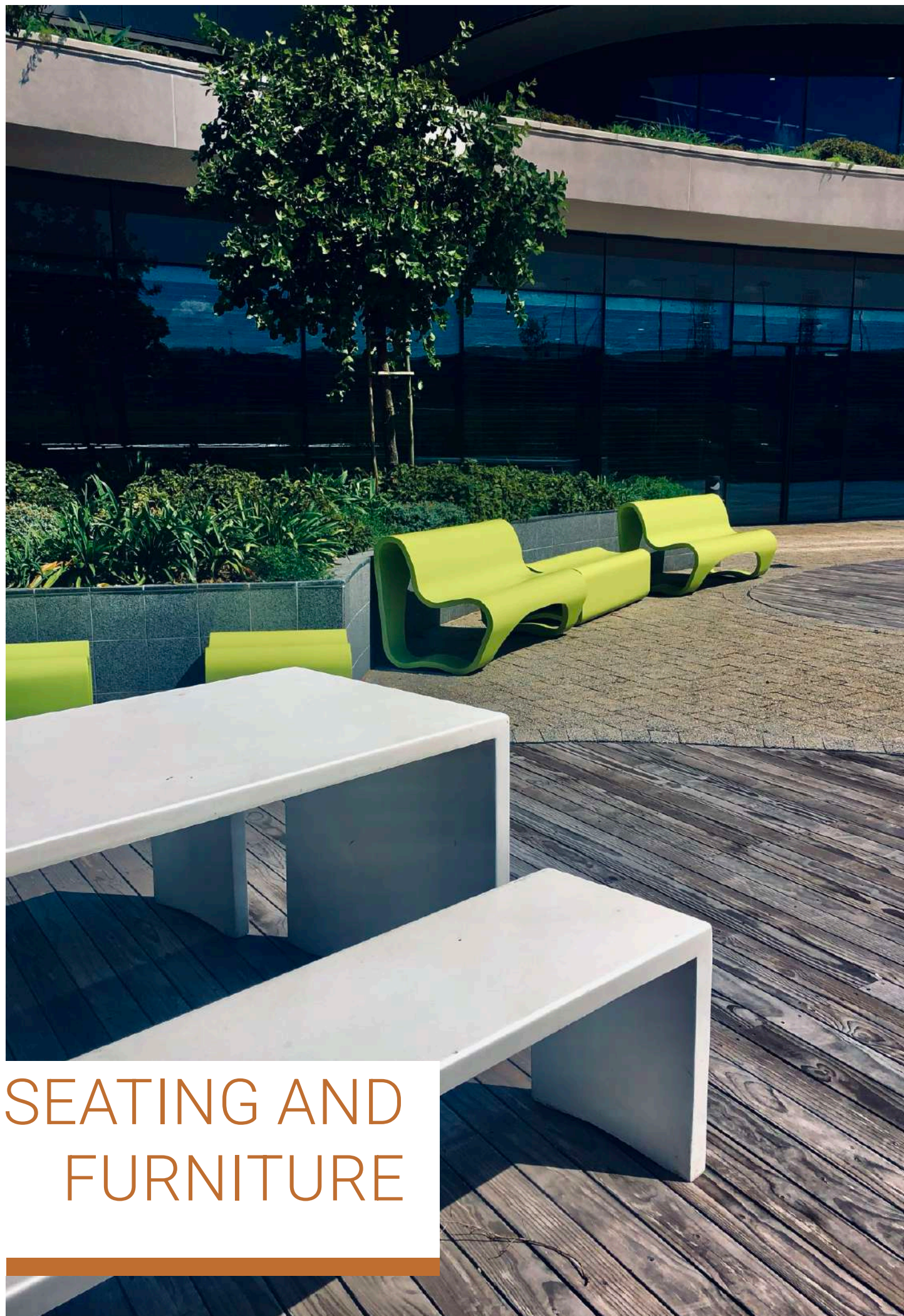


The material properties of our polyconcrete means that it has further applicability to certain industrial and agricultural applications. This especially where items have full exposure to the elements and minimal security, as the polyconcrete has no resale or alternate value. Polyconcrete is also an excellent material for any nursery growing zones of any scale given its tolerance and resistance to water, including constant irrigation.

Our structures offer a more long-term cost-effective option that far outlast the lifespan of conventional timber and steel. Further to this, the material and structures are impenetrable to pests and related diseases that can be encountered in constant moisture and the outdoors. The polyconcrete does not require constant maintenance, which further increases its efficacy.

We therefore manufacture customized solutions for a range of applications and look forward to understanding your requirements and design.





SEATING AND  
FURNITURE

---

# SEATING + FURNITURE ADAPTIONS

Various items in this section can include the following adaptations and additions, as well as custom options of your consideration.

## USB AND POWER SOCKETS

USB and power socket inserts are possible in both our polyconcrete and glass fibre reinforced polyconcrete seating and furniture as shown here. Sockets are supplied from reputable, guaranteed brands or of your choosing. Please enquire directly for options.



## COMFORT EXTENSIONS

Backrests, armrests and any additional comfort extension can be considered for seating and furniture. Below is an example of a backrest added to our original IGNF049 Triangulated Bench with matching timber inlay. Please enquire directly for options.



- These products can include embossing or debossing of logos or other branding information on flat surfaces.
- Various material inlay possibilities are available to enhance the design.



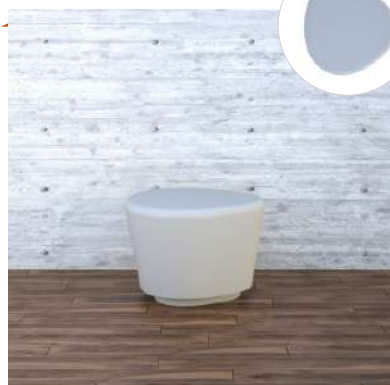
# PEBBLE RANGE



## ELONGATED PEBBLE SEAT

IGNF001

Material	Polyconcrete
Height	460mm
Width	645mm tapering to 286mm
Length	1.6m
Weight	53kg
Available Variations	
Other Specifications/Notes	Detailed drawings can be supplied



## TRIANGULATED PEBBLE SEAT

IGNF002

Material	Polyconcrete
Height	460mm
Width	645mm
Length	700mm
Weight	23kg
Available Variations	
Other Specifications/Notes	Detailed drawings can be supplied



## ROUNDED PEBBLE OTTOMAN

IGNF003

Material	Polyconcrete
Height	450mm
Top Diameter	500mm
Bottom Diameter	400mm
Base Diameter	360mm
Weight	15kg
Available Variations	
Other Specifications/Notes	Detailed drawings can be supplied

- These products can include embossing or debossing of logos or other branding information on flat surfaces.
- Various material inlay possibilities are available to enhance the design.

# PEBBLE RANGE



RECTANGULAR PEBBLE BENCH (1.5m)

IGNF005

Material	Polyconcrete
Height	420mm
Width	550mm
Length	1.5m
Weight	53kg
Available Variations	
Other Specifications/Notes	100mm radius on all four corners Detailed drawings can be supplied



RECTANGULAR PEBBLE BENCH (2.4m)

IGNF051

Material	Polyconcrete
Height	370mm (Base height is 50mm)
Width	350mm
Length	2.4m
Weight	115kg
Available Variations	
Other Specifications/Notes	100mm radius on corners. Detailed drawings can be supplied



- These products can include embossing or debossing of logos or other branding information on flat surfaces.
- Various material inlay possibilities are available to enhance the design.



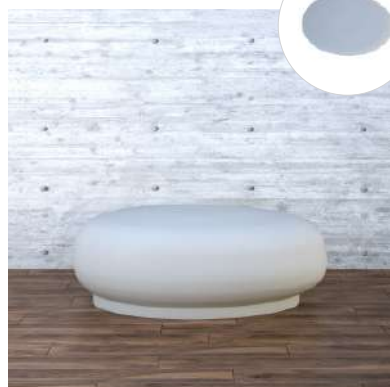
# PEBBLE RANGE



## CONTEMPORARY PEBBLE SEAT - A

IGNF006

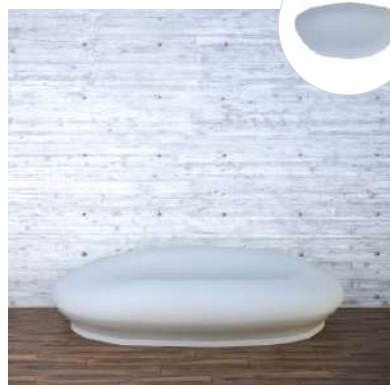
Material	Polyconcrete
Height	420mm (Base height is 50mm)
Width	1.1m
Length	1.7m
Weight	85kg
Available Variations	
Other Specifications/Notes	Detailed drawings can be supplied



## CONTEMPORARY PEBBLE SEAT - B

IGNF007

Material	Polyconcrete
Height	420mm (Base height is 50mm)
Width	830mm
Length	1.2m
Weight	53kg
Available Variations	
Other Specifications/Notes	Detailed drawings can be supplied



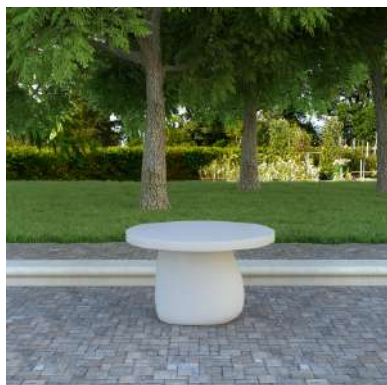
## CONTEMPORARY PEBBLE SEAT - C

IGNF008

Material	Polyconcrete
Height	520mm (Base height is 50mm)
Width	1.1m
Length	2.1m
Weight	85kg
Available Variations	
Other Specifications/Notes	Detailed drawings can be supplied

- These products can include embossing or debossing of logos or other branding information on flat surfaces.
- Various material inlay possibilities are available to enhance the design.

# PEBBLE RANGE



**OBLIQUE PEBBLE TABLE**

IGNF056

Material	Glass fibre reinforced polyconcrete
Height	600mm
Top Diameter	1m
Bottom Width	460mm (at widest)
Bottom Length	610mm (at longest)
Weight	42kg (includes a weighted base)
Available Variations	
Other Specifications/Notes	60mm thick table top, Detailed drawings can be supplied



**ROUND HOURGLASS TABLE**

IGNF036

Material	Polyconcrete
Height	760mm
Top Diameter	800mm
Base Diameter	400mm
Weight	106kg
Available Variations	
Other Specifications/Notes	Detailed drawings can be supplied



**FLINT TABLE**

IGNF061

Material	Glass fibre reinforced polyconcrete
Height	760mm
Top Diameter	1.6m
Leg Length	Long vertical 800mm, Short horizontal 650mm
Leg Width	140mm at top of legs, narrows to 80mm at bottom
Weight	160kg
Available Variations	
Other Specifications/Notes	60mm thick table top, Detailed drawings can be supplied

- These products can include embossing or debossing of logos or other branding information on flat surfaces.
- Various material inlay possibilities are available to enhance the design.

# PEBBLE RANGE



## RECTANGULAR FLINT TABLE

IGNF063

Material	Glass fibre reinforced polyconcrete
Height	750mm
Table Top Width	1.3m
Table Top Length	3.6m
Leg Lengths	Middle – 1623mm   Side – 613mm
Leg Widths	150mm, tapers down to 120mm
Weight	145kg
Available Variations	
Other Specifications/Notes	45mm thick table top, Detailed drawings can be supplied



- These products can include embossing or debossing of logos or other branding information on flat surfaces.
- Various material inlay possibilities are available to enhance the design.

# ORGANIC RANGE



## ORGANIC ROCKER

IGNF010

Material	Polyconcrete
Seat Height	380mm
Total Height	950mm
Width	640mm
Length	1.3m
Weight	120kg
Available Variations	
Other Specifications/Notes	Detailed drawings can be supplied



## ORGANIC LOUNGER

IGNF011

Material	Polyconcrete
Seat Height	380mm
Total Height	770mm
Width	640mm
Length	1.8m
Weight	120kg
Available Variations	
Other Specifications/Notes	Detailed drawings can be supplied



## ORGANIC BENCH

IGNF012

Material	Polyconcrete
Seat Height	450mm
Total Height	775mm
Width	750mm
Length	1.5m
Weight	120kg
Available Variations	
Other Specifications/Notes	Front seat height is 450mm, Seat height towards backrest is 415mm, Detailed drawings can be supplied

- These products can include embossing or debossing of logos or other branding information on flat surfaces.
- Various material inlay possibilities are available to enhance the design.

# ORGANIC RANGE



### ORGANIC OTTOMAN (FLAT TOP)

IGNF013

Material	Polyconcrete
Height	420mm
Width	550mm
Length	605mm
Weight	45kg
Available Variations	Any length between 300mm and 550mm
Other Specifications/Notes	Detailed drawings can be supplied



### ORGANIC OTTOMAN (CURVED TOP)

IGNF014

Material	Polyconcrete
Height	350mm
Width	540mm
Length	605mm
Weight	45kg
Available Variations	Any length between 300mm and 550mm
Other Specifications/Notes	60° curve (Includes curved bottom) Detailed drawings can be supplied

- These products can include embossing or debossing of logos or other branding information on flat surfaces.
- Various material inlay possibilities are available to enhance the design.



# ORGANIC RANGE



## CURVED ORGANIC OTTOMAN (FLAT TOP)

IGNF015

Material	Polyconcrete
Height	420mm
Width	550mm
Inner Radius	500mm
Weight	45kg
Available Variations	
Other Specifications/Notes	60° curve Detailed drawings can be supplied



## ELONGATED ORGANIC OTTOMAN (FLAT TOP)

IGNF016

Material	Polyconcrete
Height	420mm
Width	550mm
Length	1.5m
Weight	120kg
Available Variations	Any length between 300mm and 1.5m
Other Specifications/Notes	Detailed drawings can be supplied



## ELONGATED ORGANIC OTTOMAN (CURVED TOP)

IGNF017

Material	Polyconcrete
Height	375mm
Width	550mm
Length	1.5m
Weight	120kg
Available Variations	Any length between 300mm and 1.5m
Other Specifications/Notes	Detailed drawings can be supplied

- These products can include embossing or debossing of logos or other branding information on flat surfaces.
- Various material inlay possibilities are available to enhance the design.

# ULTERIOR RANGE



**ULTERIOR TABLE (1.8m)**

IGNF018

Material	Polyconcrete
Height	770mm
Width	900mm
Length	1.8m
Weight	120kg
Available Variations	Available with or without ellipse cut outs/umbrella hole
Other Specifications/Notes	Detailed drawings can be supplied



**ULTERIOR TABLE (800mm)**

IGNF019

Material	Polyconcrete
Height	770mm
Width	900mm
Length	800mm
Weight	53kg
Available Variations	Available with or without ellipse cut outs/umbrella hole
Other Specifications/Notes	Detailed drawings can be supplied

- These products can include embossing or debossing of logos or other branding information on flat surfaces.
- Various material inlay possibilities are available to enhance the design.

# ULTERIOR RANGE



## ULTERIOR TABLE BENCH (1.7m)

IGNF020

Material	Polyconcrete
Height	500mm
Width	400mm
Length	1.7m
Weight	40kg
Available Variations	Available with or without ellipse cut outs
Other Specifications/Notes	Detailed drawings can be supplied



## ULTERIOR TABLE BENCH (700mm)

IGNF021

Material	Polyconcrete
Height	450mm
Width	400mm
Length	700mm
Weight	30kg
Available Variations	Available with or without ellipse cut outs
Other Specifications/Notes	Detailed drawings can be supplied



## ULTERIOR STOOL

IGNF022

Material	Polyconcrete
Height	435mm
Width	400mm
Length	500mm
Weight	20kg
Available Variations	Available with or without ellipse cut outs
Other Specifications/Notes	Detailed drawings can be supplied

- These products can include embossing or debossing of logos or other branding information on flat surfaces.
- Various material inlay possibilities are available to enhance the design.

ULTERIOR RANGE



ULTERIOR BENCH

IGNF023

Material	Polyconcrete
Height	500mm, backrest height 900mm
Width	450mm
Length	1.7m
Weight	75kg
Available Variations	Available with or without ellipse cut outs
Other Specifications/Notes	Backrest can be a different colour to the leg section Detailed drawings can be supplied



SINGLE ULTERIOR BENCH

IGNF057

Material	Polyconcrete
Height	500mm, backrest height 900mm
Width	450mm
Length	700mm
Weight	43kg
Available Variations	Available with or without ellipse cut outs
Other Specifications/Notes	Backrest can be different colour to the leg section. Detailed drawings can be supplied

- These products can include embossing or debossing of logos or other branding information on flat surfaces.
- Various material inlay possibilities are available to enhance the design.



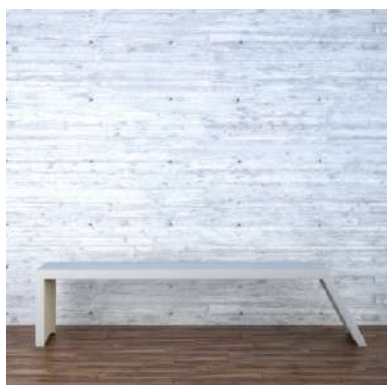
# RECTANGULAR RANGE



## RECTANGULAR BENCH (2.2m)

IGNF024

Material	Glass fibre reinforced polyconcrete
Height	500mm
Width	400mm
Length	2.2m
Weight	33kg
Available Variations	
Other Specifications/Notes	Material width: 60mm, Detailed drawings can be supplied



## RECTANGULAR ANGLED BENCH

IGNF025

Material	Glass fibre reinforced polyconcrete
Height	500mm
Width	400mm
Length	2.2m
Weight	33kg
Available Variations	
Other Specifications/Notes	Material width: 60mm, Sloping leg: 118° Detailed drawings can be supplied



## RECTANGULAR BENCH (1.9m)

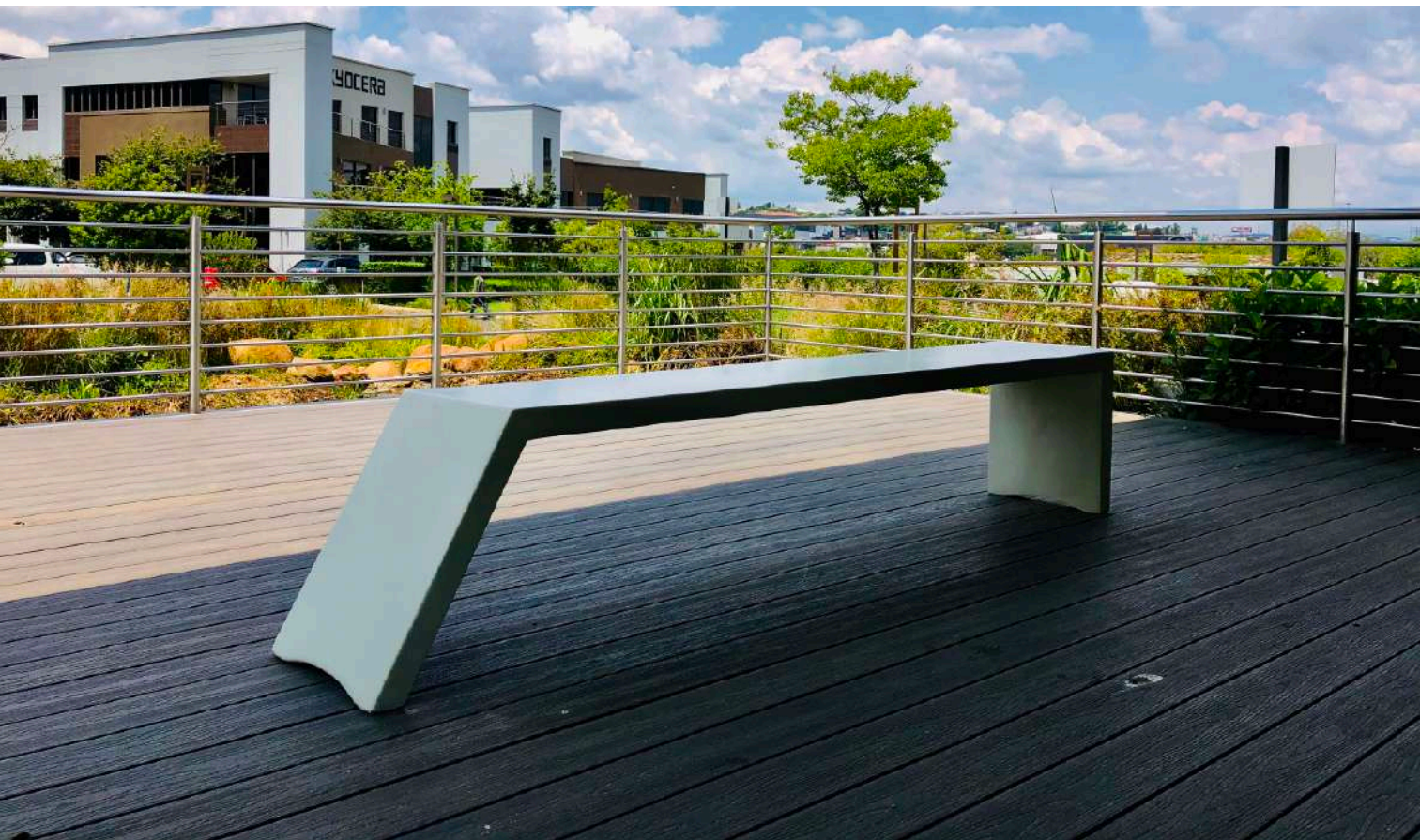
IGNF026

Material	Glass fibre reinforced polyconcrete
Height	500mm
Width	400mm
Length	1.9m
Weight	28kg
Available Variations	
Other Specifications/Notes	Material width: 60mm, Detailed drawings can be supplied

- These products can include embossing or debossing of logos or other branding information on flat surfaces.
- Various material inlay possibilities are available to enhance the design.



# RECTANGULAR RANGE



RECTANGULAR TABLE (3m)

IGNF027

Material	GRP top, Polyconcrete legs
Height	750mm
Width	1.2m
Length	3m
Weight	78kg
Available Variations	Umbrella hole optional
Other Specifications/Notes	Material width table top: 40mm, Material width legs: 32mm Detailed drawings can be supplied

- These products can include embossing or debossing of logos or other branding information on flat surfaces.
- Various material inlay possibilities are available to enhance the design.

# RECTANGULAR RANGE



RECTANGULAR BLOCK TABLE (2.4m)

IGNF029

Material	Glass fibre reinforced polyconcrete
Height	770mm
Width	770mm
Length	2.4m
Weight	60kg
Available Variations	
Other Specifications/Notes	Material width: 60mm, Detailed drawings can be supplied



RECTANGULAR DINING TABLE (4m)

IGNX018

Material	-
Height	770mm
Width	1.2m
Length	4m
Weight	-
Available Variations	
Other Specifications/Notes	This item includes a built-in ice trough down the center of the table. A clear Perspex cover is included should you wish for the trough to be covered. Detailed drawings can be supplied



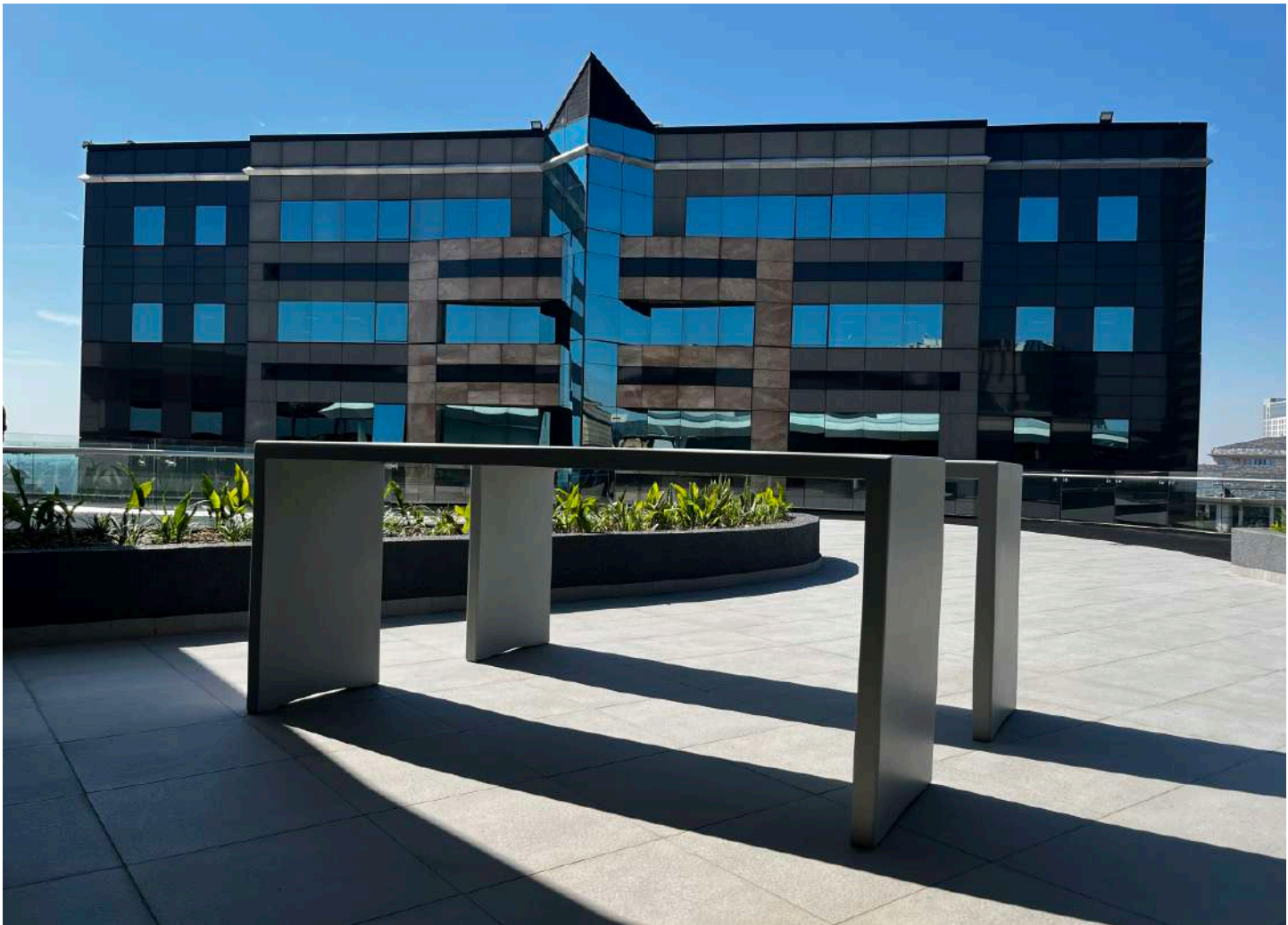
RECTANGULAR BAR COUNTER

IGNF046

Material	Glass fibre reinforced polyconcrete
Height	1.1m
Width	650mm
Length	2.5m
Weight	67.5kg
Available Variations	
Other Specifications/Notes	Detailed drawings can be supplied

- These products can include embossing or debossing of logos or other branding information on flat surfaces.
- Various material inlay possibilities are available to enhance the design.





# GEOMETRIC RANGE



## GEOMETRIC SINGLE-SEATER

IGNF030

Material	Polyconcrete
Height	595mm
Width	745mm
Length	745mm
Weight	31kg
Available Variations	
Other Specifications/Notes	Seat height 260mm, Detailed drawings can be supplied



## GEOMETRIC DOUBLE-SEATER

IGNF031

Material	Polyconcrete
Height	595mm
Width	745mm
Length	1.35m
Weight	45kg
Available Variations	Any length between 745mm and 1.35m
Other Specifications/Notes	Seat height 260mm, Detailed drawings can be supplied

- These products can include embossing or debossing of logos or other branding information on flat surfaces.
- Various material inlay possibilities are available to enhance the design.



# GEOMETRIC RANGE



## GEOMETRIC SQUARE LOUNGER

IGNX019

Material	Glass fibre reinforced polyconcrete
Height	670mm
Width	2m
Length	2.7m
Weight	221kg
Available Variations	
Other Specifications/Notes	Seat height 370mm Detailed drawings can be supplied



## GEOMETRIC RECTANGULAR LOUNGER

IGNX020

Material	Glass fibre reinforced polyconcrete
Height	670mm
Width	1.25m
Length	5.8m
Weight	255kg
Available Variations	
Other Specifications/Notes	Seat height 370mm Detailed drawings can be supplied



- These products can include embossing or debossing of logos or other branding information on flat surfaces.
- Various material inlay possibilities are available to enhance the design.





# ABSTRACT RANGE



## ABSTRACT BENCH

IGNF039

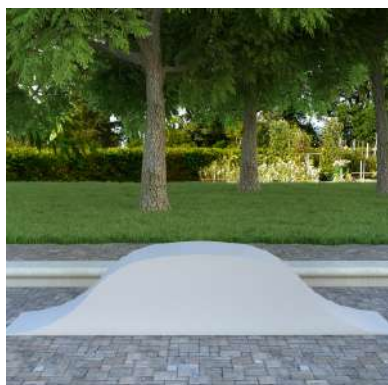
Material	Polyconcrete
Seat Height	450mm
Width	750mm
Length	1.9m
Weight	95kg
Available Variations	
Other Specifications/Notes	Detailed drawings can be supplied



## BEAN SEATER

IGNF041

Material	Glass fibre reinforced polyconcrete
Height	520mm
Width	1.2m
Length	2.2m
Weight	68kg
Available Variations	
Other Specifications/Notes	Detailed drawings can be supplied



## CURVED PLAY ARC

IGNF058

Material	Glass fibre reinforced polyconcrete
Height	600mm (at topmost point, including 100mm recessed base)
Width	550mm
Length	2.5m
Weight	-
Available Variations	
Other Specifications/Notes	40mm internal lip return on underside of bench for fixing. Detailed drawings can be supplied.

- These products can include embossing or debossing of logos or other branding information on flat surfaces.
- Various material inlay possibilities are available to enhance the design.



# ABSTRACT RANGE



## TRIANGULATED BENCH A

IGNF048

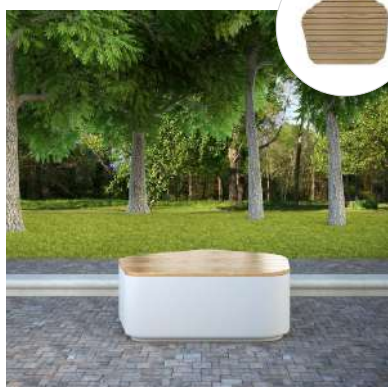
Material	Glass fibre reinforced polyconcrete with wooden slat inlay
Height	400mm
Width	640mm
Length	2m
Weight	55kg
Available Variations	
Other Specifications/Notes	Detailed drawings can be supplied



## TRIANGULATED BENCH A (GRP ONLY)

IGNF053

Material	Glass fibre reinforced polyconcrete
Height	400mm
Width	640mm
Length	2m
Weight	52kg
Available Variations	
Other Specifications/Notes	Detailed drawings can be supplied



## TRIANGULATED BENCH B

IGNF049

Material	Glass fibre reinforced polyconcrete with wooden slat inlay
Height	500mm
Width	880mm
Length	1.1m
Weight	66kg
Available Variations	
Other Specifications/Notes	Detailed drawings can be supplied

- These products can include embossing or debossing of logos or other branding information on flat surfaces.
- Various material inlay possibilities are available to enhance the design.





# ABSTRACT RANGE



## TRIANGULATED BENCH B (GRP ONLY)

IGNF054

Material	Glass fibre reinforced polyconcrete
Height	500mm
Width	880mm
Length	1.1m
Weight	44kg
Available Variations	
Other Specifications/Notes	Detailed drawings can be supplied



## TRIANGULATED BENCH C

IGNF064

Material	Glass fibre reinforced polyconcrete with wooden slat inlay
Height	600mm
Width	1m
Length	2.4m
Weight	-
Available Variations	
Other Specifications/Notes	Detailed drawings can be supplied



## TRIANGULATED BENCH C (GRP ONLY)

IGNF065

Material	Glass fibre reinforced polyconcrete
Height	600mm
Width	1m
Length	2.4m
Weight	-
Available Variations	
Other Specifications/Notes	Detailed drawings can be supplied

- These products can include embossing or debossing of logos or other branding information on flat surfaces.
- Various material inlay possibilities are available to enhance the design.



# ABSTRACT RANGE



## PLATFORM BENCH

IGNF043

Material	Glass fibre reinforced polyconcrete
Height	450mm
Width	1m
Length	2.5m
Weight	52kg
Available Variations	
Other Specifications/Notes	2 bicycle slots, 15mm chamfer to all corners, vertical debossed detail on one face Detailed drawings can be supplied



## PLATFORM SEATER

IGNF044

Material	Glass fibre reinforced polyconcrete
Height	350mm
Width	1m
Length	2m
Weight	48kg
Available Variations	
Other Specifications/Notes	15mm chamfer to all corners, vertical debossed detail on two faces. Detailed drawings can be supplied



- These products can include embossing or debossing of logos or other branding information on flat surfaces.
- Various material inlay possibilities are available to enhance the design.





# ABSTRACT RANGE



## STAR BENCH

IGNF066

Material	Glass fibre reinforced polyconcrete
Height	500mm
Width	1.8m (at widest)
Length	1.8m (at longest)
Weight	-
Available Variations	
Other Specifications/Notes	Detailed drawings can be supplied



PROSPECTIVE ITEM



## HASHTAG BENCH

IGNX058

Material	Glass fibre reinforced polyconcrete with wooden slat inlay
Height	500mm
Width	2.5m (at widest)
Length	2.9m (at longest)
Weight	-
Available Variations	
Other Specifications/Notes	Detailed drawings can be supplied.



PROSPECTIVE ITEM



## DIASPORA

IGNX005

Material	Glass fibre reinforced polyconcrete with material inlay of your choosing (see astroturf inlay in above image)
Height	450mm
Width	640mm
Length	4.4m
Weight	-
Available Variations	
Other Specifications/Notes	Detailed drawings can be supplied

- These products can include embossing or debossing of logos or other branding information on flat surfaces.
- Various material inlay possibilities are available to enhance the design.

# ARC COMBINATIONS



## ARC OTTOMAN

IGNF037

Material	Glass fibre reinforced polyconcrete
Height	450mm
Width	600mm
Inner Radius	500mm
Weight	47kg
Available Variations	
Other Specifications/Notes	60° curve, 50mm high undercut base Detailed drawings can be supplied



## CHEVRON BENCH

IGNF040

Material	Glass fibre reinforced polyconcrete
Height	450mm
Width	500mm
Length	1.9m
Weight	56kg
Available Variations	
Other Specifications/Notes	Detailed drawings can be supplied



- These products can include embossing or debossing of logos or other branding information on flat surfaces.
- Various material inlay possibilities are available to enhance the design.





# ARC COMBINATIONS



## ARC BENCH

IGNF059

Material	Glass fibre reinforced polyconcrete
Height	450mm
Width	1.3m
Seat Width	600mm
Length	2.6m
Weight	104kg
Available Variations	
Other Specifications/Notes	50mm high undercut base. Detailed drawings can be supplied



## ARC PLANTER

IGNP022

Material	Glass fibre reinforced polyconcrete
Height	800mm (with 100mm high recessed base)
Width	500mm
Length	1.3m
Weight	76kg
Available Variations	
Other Specifications/Notes	Material width: 6-8mm, 40mm internal lip return, Horizontal internal support ribs. Designed to fit with IGNF059 -Arc Bench. Detailed drawings can be supplied

IGNP022T

Material: GRP Height: 80mm (20mm gap from side view) Weight: 18kg



Combination of IGNF059 and IGNP022:  
Arc Set (as per modular and pentagonal sets)

- These products can include embossing or debossing of logos or other branding information on flat surfaces.
- Various material inlay possibilities are available to enhance the design.



# ARC COMBINATIONS



## MODULAR SEAT

IGNX010

Material	Glass fibre reinforced polyconcrete
Height	500mm
Width	1m (Plus 150mm extension to join pieces)
Length	1m (Plus 150mm extension to join pieces)
Weight	-
Available Variations	
Other Specifications/Notes	Detailed drawings can be supplied



## MODULAR SEAT (WOODEN SLATS)

IGNX027

Material	Glass fibre reinforced polyconcrete with wooden slat inlay
Height	500mm
Width	1m (Plus 150mm extension to join pieces)
Length	1m (Plus 150mm extension to join pieces)
Weight	-
Available Variations	
Other Specifications/Notes	Detailed drawings can be supplied.



## MODULAR PLANTER

IGNX028

Material	Glass fibre reinforced polyconcrete
Height	500mm
Width	1m (Plus 150mm extension to join pieces)
Length	1m (Plus 150mm extension to join pieces)
Weight	-
Available Variations	
Other Specifications/Notes	Detailed drawings can be supplied. Material thickness 6-8mm, with 40mm internal lip return. Drip tray optional

IGNX028T      Material: GRP   Height: 80mm (20mm gap from side view)   Weight: -

- These products can include embossing or debossing of logos or other branding information on flat surfaces.
- Various material inlay possibilities are available to enhance the design.

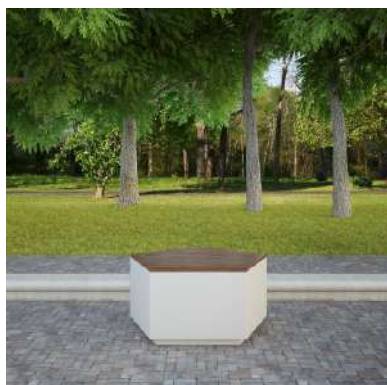
# ARC COMBINATIONS



## PENTAGONAL SEAT

IGNF052

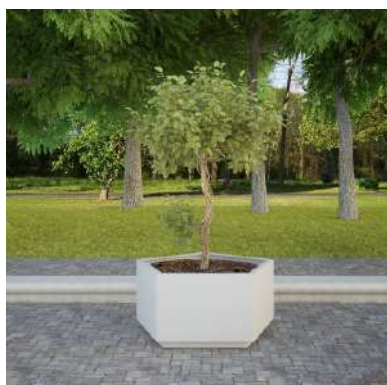
Material	Glass fibre reinforced polyconcrete
Height	470mm
Width	920mm (each side panel is 600mm wide)
Length	970mm
Weight	32kg
Available Variations	
Other Specifications/Notes	Detailed drawings can be supplied



## PENTAGONAL SEAT (WOODEN SLATS)

IGNF055

Material	Glass fibre reinforced polyconcrete with wooden slat inlay
Height	500mm
Width	920mm (each side panel is 600mm wide)
Length	970mm
Weight	47kg
Available Variations	
Other Specifications/Notes	Detailed drawings can be supplied



## PENTAGONAL PLANTER

IGNP021

Material	Glass fibre reinforced polyconcrete
Height	470mm
Width	920mm (each side panel is 600mm wide)
Length	970mm
Weight	33kg
Available Variations	
Other Specifications/Notes	Detailed drawings can be supplied. Material thickness 6-8mm with 40mm internal lip return.

IGNP021T      Material: GRP   Height: 30mm (20mm gap from side view)   Weight: 3kg

- These products can include embossing or debossing of logos or other branding information on flat surfaces.
- Various material inlay possibilities are available to enhance the design.



# ARC COMBINATIONS



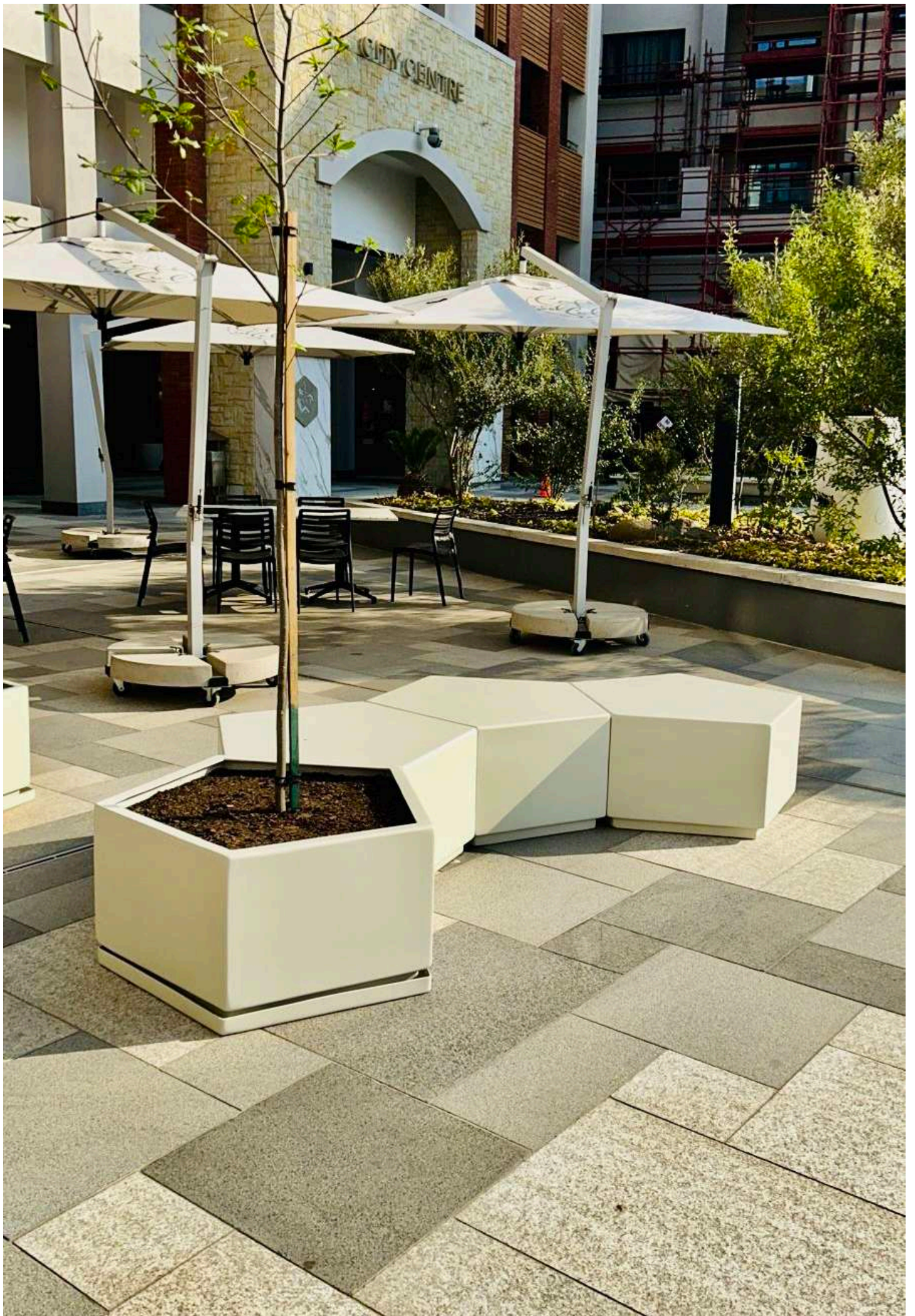
Combination of IGNX027, IGNX028 and IGNX10 : Modular Set



Combination of IGNF052, IGNF055 and IGNP021 : Pentagonal Set

- These products can include embossing or debossing of logos or other branding information on flat surfaces.
- Various material inlay possibilities are available to enhance the design.







# PLANTER-BENCH RANGE



## RECTANGULAR PLANTER-BENCH

IGNF042

Material	Glass fibre reinforced polyconcrete
Height	450mm
Width	600mm
Length	2.5m
Weight	70kg
Available Variations	
Other Specifications/Notes	Planter section is 500mm wide x 1m in length. Base height is 50mm, Detailed drawings can be supplied. Note no drip tray



## CIRCULAR PLANTER-BENCH

IGNX052

Material	Glass fibre reinforced polyconcrete
Height	900mm (Including 100mm high recessed base)
Diameter	1.5m
Seat Width	400mm
Weight	120kg
Available Variations	
Other Specifications/Notes	Birch Ply (30mm) with laminated oak finish, can also be supplied with plain GRP seat. Oak can be provided plain or with 6mm V grooves. Detailed drawings can be supplied.

- These products can include embossing or debossing of logos or other branding information on flat surfaces.
- Various material inlay possibilities are available to enhance the design.

# PLANTER-BENCH RANGE

- These products can include embossing or debossing of logos or other branding information on flat surfaces.
- Various material inlay possibilities are available to enhance the design.



## TRIANGULATED PLANTER-BENCH

IGNF050

Material	Glass fibre reinforced polyconcrete
Height	750mm (Including 32mm high recessed base)
Seat Height	400mm
Width	970mm (at widest), 225mm (at smallest width side); seat width 400mm all around
Length	2.6m (at longest)
Weight	155kg
Available Variations	
Other Specifications/Notes	Planter section is 500mm wide x 1m in length. Base height is 32mm, Detailed drawings can be supplied Birch Ply (30mm) with laminated Oak finish, can also be supplied with plain GRP seat. Note no drip tray. Oak can be provided plain or with 6mm V grooves.



## TRIANGULATED PLANTER-BENCH (GPR SEATING)

IGNF062

Material	Glass fibre reinforced polyconcrete
Height	750mm (Including 32mm high recessed base)
Seat Height	400mm
Width	970mm (at widest), 225mm (at smallest width side); seat width 360mm all around
Length	2.6m (at longest)
Weight	149kg
Available Variations	
Other Specifications/Notes	Planter section is 500mm wide x 1m in length. Base height is 32mm. Note no drip tray. Detailed drawings can be supplied



## TRIANGULATED POT-BENCH

IGNX059

Material	Glass fibre reinforced polyconcrete
Height	1.2m (including 100mm high recessed base)
Width	1.4m
Length	1.5m
Weight	-
Available Variations	
Other Specifications/Notes	Birch Ply (30mm) with laminated oak finish, can also be supplied with plain GRP seat. Oak can be provided plain or with 6mm V grooves. Detailed drawings can be supplied



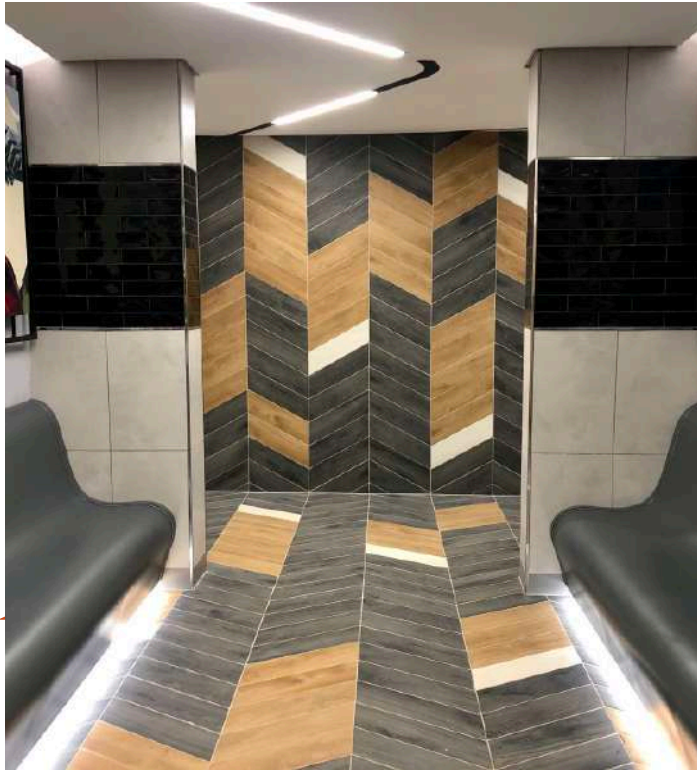




---

# LONG LENGTH FIXED BENCH STRUCTURES

Long length fixed bench structures can be manufactured to your required length and your required aesthetic profile. This is an excellent option for custom lighting inlay where possible. Please enquire directly for custom detail.







# POTS AND PLANTERS



---

## POT VARIATIONS

We provide a variety of pot options for your need and aesthetic. These are indicated for all applicable pots and planters in the catalogue.



Option 1: Without base.



Option 2: Without base with drip tray.



Option 3: With base.



Option 4: With base and drip tray.

# PEBBLE RANGE



## OBLIQUE PEBBLE POT (SMALL)

IGNP012

Material	Glass fibre reinforced polyconcrete
Height	700mm
Width	460mm
Length	610mm
Weight	21kg
Other Specifications/Notes	Material width: 6 - 8mm, 40mm internal lip return with internal vertical return, horizontal internal support ribs. Detailed drawings can be supplied

IGNP012T    Material: GRP   Height: 80mm   Weight: 9kg



## OBLIQUE PEBBLE POT (MEDIUM)

IGNP013

Material	Glass fibre reinforced polyconcrete
Height	1m
Width	640mm
Length	870mm
Weight	51kg
Other Specifications/Notes	Material width: 6 - 8mm, 40mm internal lip return with internal vertical return, horizontal internal support ribs. Detailed drawings can be supplied

IGNP013T    Material: GRP   Height: 80mm   Weight: 11kg



## OBLIQUE PEBBLE POT (LARGE)

IGNP014

Material	Glass fibre reinforced polyconcrete
Height	1.1m
Width	840mm
Length	1.050m
Weight	68kg
Other Specifications/Notes	Material width: 6 - 8mm, 40mm internal lip return with internal vertical return, horizontal internal support ribs. Detailed drawings can be supplied

IGNP014T    Material: GRP   Height: 80mm   Weight: 14kg

- These products can include embossing or debossing of logos or other branding information on flat surfaces.
- Various material inlay possibilities are available to enhance the design.
- It is possible to build top hat returns into all pots and planters, please contact us directly to discuss options and pricing.
- Similarly, drainage holes can be added to all items, given your planting requirements; environmental and aesthetic concerns.







# PEBBLE RANGE



## PEBBLE POT

IGNP015

Material	Glass fibre reinforced polyconcrete
Height	1m
Width	1m
Length	1.5m
Weight	78kg
Other Specifications/Notes	Material width: 6 - 8mm, Internal lip return with internal vertical return, Horizontal internal support ribs. Detailed drawings can be supplied

IGNP015T    Material: GRP   Height: 80mm   Weight: 21kg



## POD PLANTER

IGNP016

Material	Glass fibre reinforced polyconcrete
Height	900mm (Highest point) to 621mm
Width	1.6m
Length	1.75m
Weight	62kg
Other Specifications/Notes	Material width: 6 - 8mm, 40mm internal lip return, Horizontal internal support ribs. Detailed drawings can be supplied



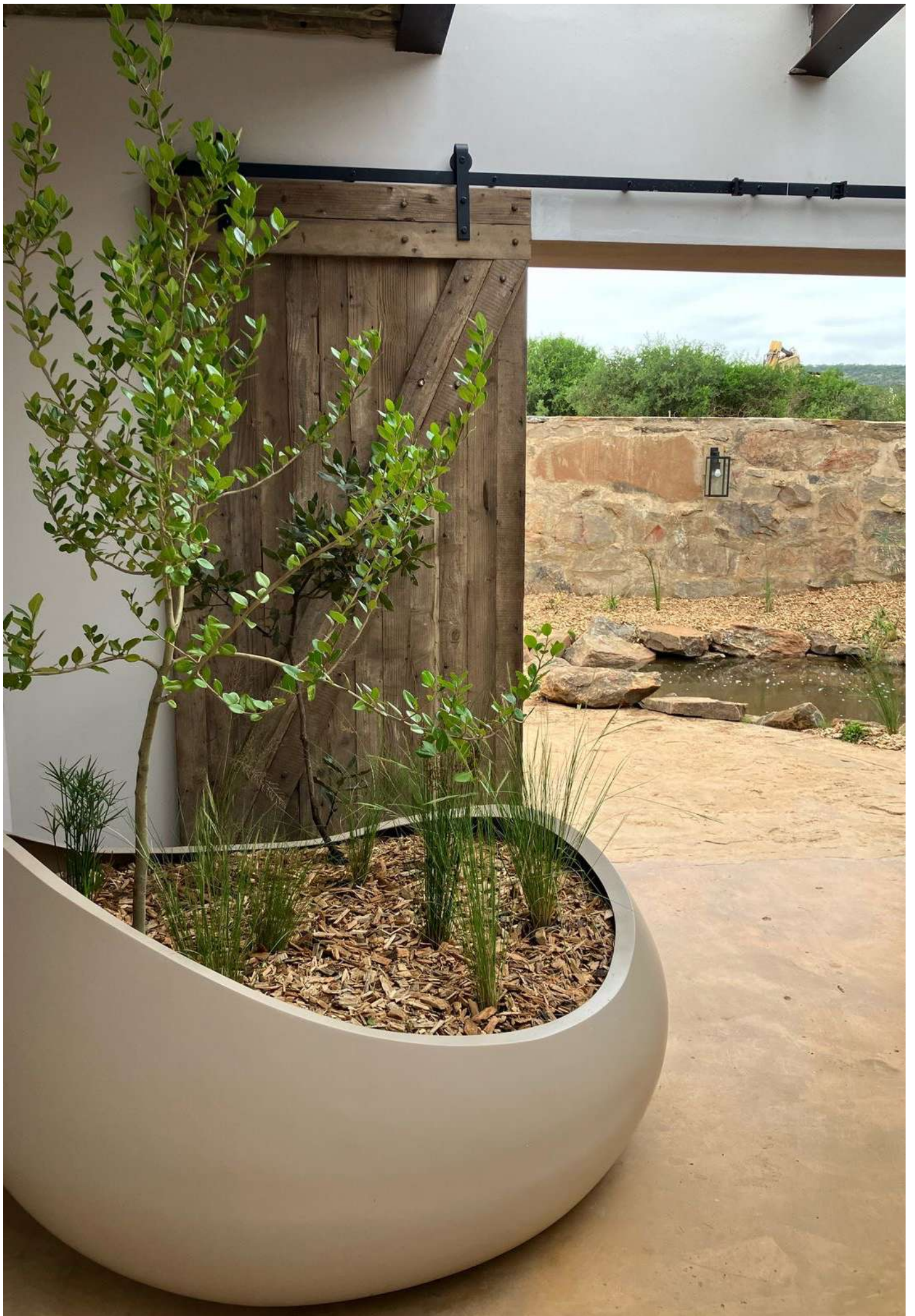
## OVAL POT

IGNP018

Material	Glass fibre reinforced polyconcrete
Height	450mm (Including 100mm high recessed base)
Width	450mm
Length	1.25m
Weight	24kg
Other Specifications/Notes	Material width: 6 - 8mm, 40mm internal lip return, Horizontal internal support ribs. Detailed drawings can be supplied

IGNP018T    Material: GRP   Height: 80mm (20mm gap from side view)   Weight: 3kg

- These products can include embossing or debossing of logos or other branding information on flat surfaces.
- Various material inlay possibilities are available to enhance the design.
- It is possible to build top hat returns into all pots and planters, please contact us directly to discuss options and pricing.
- Similarly, drainage holes can be added to all items, given your planting requirements; environmental and aesthetic concerns.





# TRIANGULATED POTS



## TAPERED SQUARE POT

IGNP007

Material	Polyconcrete
Height	890mm
Top Width	600mm
Bottom Width	400mm
Weight	54kg
Other Specifications/Notes	Material width: 20mm. Detailed drawings can be supplied

IGNP007T    Material: GRP   Height: 80mm (20mm gap from top view)   Weight: 4.2kg



## TRIANGULATED POT

IGNP017

Material	Glass fibre reinforced polyconcrete
Height	1.2m (Including 100mm high recessed base)
Width	1.4m
Length	1.5m
Weight	93kg
Available Variations	Possible to provide without a base to allow for in-ground tree planting through planter sleeve
Other Specifications/Notes	Material width: 6 - 8mm, 40mm internal lip return. Detailed drawings can be supplied

IGNP017T    Material: GRP   Height: 80mm (20mm gap from side view)   Weight: 19kg



## TRIANGULATED PLANTER

IGNP019

Material	Glass fibre reinforced polyconcrete
Height	750mm (Including 32mm high recessed base)
Width	970mm (at widest), 225mm (at smallest width side)
Length	2.6m (at longest)
Weight	89kg
Available Variations	Possible to provide without a base to allow for in-ground tree planting through planter sleeve
Other Specifications/Notes	Detailed drawings can be supplied. Note no drip tray.



# CIRCULAR POTS



## STANDARD OFF-ROUND POT

IGNP001

Material	Polyconcrete
Height	1.1m (with base), 1m (without base)
Top Diameter	750mm
Bottom Diameter	450mm
Weight	55kg (with base), 52kg (without base)
Available Variations	Any pot height between 500mm and 1m from the base up
Other Specifications/Notes	Material width: 20mm. Detailed drawings can be supplied

IGNP001T    **Material:** GRP    **Height:** 80mm - 20mm gap from side view (with base), 20mm gap from top view (without base)    **Weight:** 4kg



## 1.5M DIAMETER OFF-ROUND POT

IGNP004

Material	Glass fibre reinforced polyconcrete
Height	1.3m (Including 100mm for recessed base)
Top Diameter	1.5m
Bottom Diameter	Tapers from top with 7° gradient to base
Weight	75kg
Other Specifications/Notes	Material width: 6 - 8mm, 40mm internal lip return with 100mm drop down, Horizontal internal support ribs. Detailed drawings can be supplied

IGNP004T    **Material:** GRP    **Height:** 80mm (20mm gap from side view)    **Weight:** 21kg



## SUGARBOWL

IGNP003

Material	Glass fibre reinforced polyconcrete
Height	840mm
Top Diameter	1.7m
Bottom Diameter	800mm
Weight	60kg
Other Specifications/Notes	Material width: 6 - 8mm, 40mm internal lip return, Horizontal internal support ribs. Detailed drawings can be supplied

IGNP003T    **Material:** GRP    **Height:** 70mm    **Weight:** 6kg

- These products can include embossing or debossing of logos or other branding information on flat surfaces.
- Various material inlay possibilities are available to enhance the design.
- It is possible to build top hat returns into all pots and planters, please contact us directly to discuss options and pricing.
- Similarly, drainage holes can be added to all items, given your planting requirements; environmental and aesthetic concerns.

# CIRCULAR POTS



SUGARBOWL (A)

IGNP024

Material	Glass fibre reinforced polyconcrete
Height	1m (including 100mm high recessed base)
Top Diameter	1.2m
Length	800mm
Other Specifications/Notes	Material Width: 6-8mm, 40mm internal lip return, Horizontal internal support ribs. Detailed drawings can be supplied

IGNP024T      Material: GRP   Height: 80mm



SUGARBOWL (B)

IGNP025

Material	Glass fibre reinforced polyconcrete
Height	1m (including 100mm high recessed base)
Top Diameter	1m
Length	670mm
Other Specifications/Notes	Material Width: 6-8mm, 40mm internal lip return, Horizontal internal support ribs. Detailed drawings can be supplied

IGNP024T      Material: GRP   Height: 80mm



- These products can include embossing or debossing of logos or other branding information on flat surfaces.
- Various material inlay possibilities are available to enhance the design.
- It is possible to build top hat returns into all pots and planters, please contact us directly to discuss options and pricing.
- Similarly, drainage holes can be added to all items, given your planting requirements; environmental and aesthetic concerns.

# CIRCULAR POTS

Applies to all IGNP002 variations below

IGNP002T	Material: GRP Height: 80mm - 20mm gap from side view (with base), 20mm gap from top view (without base) Weight: 21.6kg
----------	--

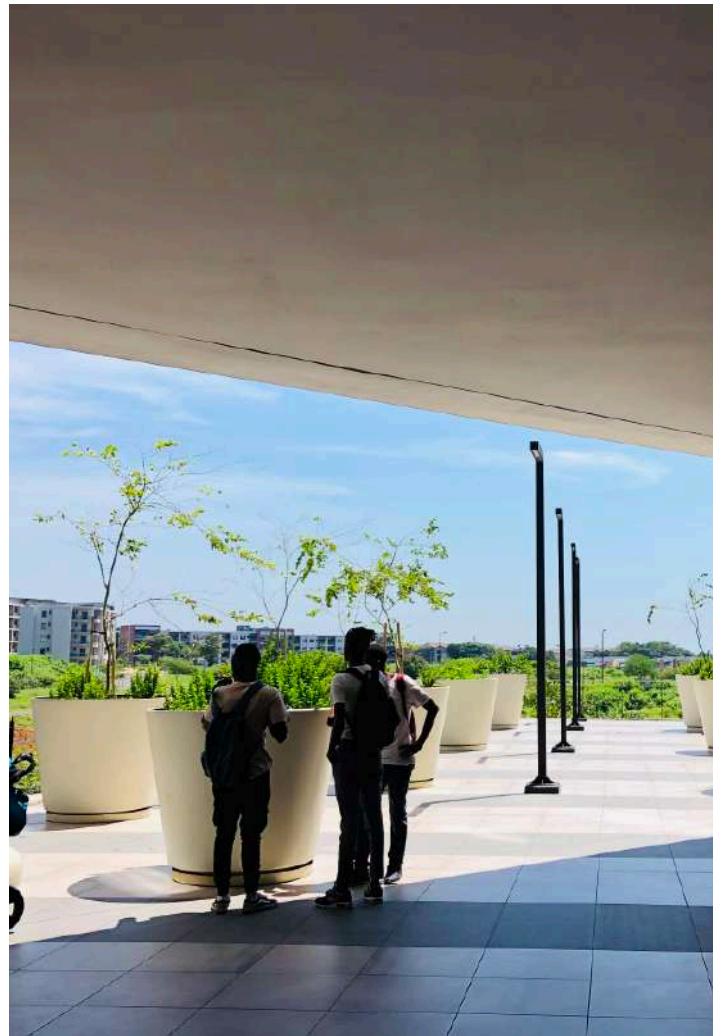
1.5M DIAMETER POT (300mm HIGH)	IGNP002A
Material	Glass fibre reinforced polyconcrete
Height	400mm (with base), 300mm (without base)
Top Diameter	1.5m
Bottom Diameter	1.45m
Weight	50.5kg (with base), 45kg (without base)
Other Specifications/Notes	Material width: 6 - 8mm, 40mm internal lip return, Horizontal internal support ribs. Detailed drawings can be supplied

1.5M DIAMETER POT (800mm HIGH)	IGNP002B
Material	Glass fibre reinforced polyconcrete
Height	900mm (with base), 800mm (without base)
Top Diameter	1.5m
Bottom Diameter	1.45m
Weight	75.5kg (with base), 70kg (without base)
Other Specifications/Notes	Material width: 6 - 8mm, 40mm internal lip return, Horizontal internal support ribs. Detailed drawings can be supplied

1.5M DIAMETER POT (1.2m HIGH)	IGNP002C
Material	Glass fibre reinforced polyconcrete
Height	1.3m (with base), 1.2m (without base)
Top Diameter	1.5m
Bottom Diameter	1.45m
Weight	90.5kg (with base), 85kg (without base)
Other Specifications/Notes	Material width: 6 - 8mm, 40mm internal lip return, Horizontal internal support ribs. Detailed drawings can be supplied

- These products can include embossing or debossing of logos or other branding information on flat surfaces.
- Various material inlay possibilities are available to enhance the design.
- It is possible to build top hat returns into all pots and planters, please contact us directly to discuss options and pricing.
- Similarly, drainage holes can be added to all items, given your planting requirements; environmental and aesthetic concerns.







# CIRCULAR POTS



## CYLINDRICAL POT (A)

IGNP009

Material	Glass fibre reinforced polyconcrete
Height	900mm (with base), 800mm (without base)
Diameter	1m
Weight	39kg (with base), 28kg (without base)
Available Variations	Possible to provide without a base to allow for in-ground tree planting through planter sleeve
Other Specifications/Notes	Material width: 6 - 8mm, 40mm internal lip return, Horizontal internal support ribs. Detailed drawings can be supplied

IGNP009T    **Material:** GRP    **Height:** 80mm - 20mm gap from side view (with base), 20mm gap from top view (without base)    **Weight:** 11kg



## CYLINDRICAL POT (B)

IGNP010

Material	Glass fibre reinforced polyconcrete
Height	1.1m (with base); 1m (without base)
Diameter	800mm
Weight	37kg (with base), 29kg (without base)
Other Specifications/Notes	Material width: 6 - 8mm, 40mm internal lip return, Horizontal internal support ribs. Detailed drawings can be supplied

IGNP010T    **Material:** GRP    **Height:** 80mm - 20mm gap from side view (with base), 20mm gap from top view (without base)    **Weight:** 8kg



## CYLINDRICAL POT (C)

IGNP011

Material	Glass fibre reinforced polyconcrete
Height	1.3m (with base), 1.2m (without base)
Diameter	600mm
Weight	33kg (with base), 27kg (without base)
Other Specifications/Notes	Material width: 6 - 8mm, 40mm internal lip return, Horizontal internal support ribs. Detailed drawings can be supplied

IGNP011T    **Material:** GRP    **Height:** 80mm - 20mm gap from side view (with base), 20mm gap from top view (without base)    **Weight:** 6kg

- These products can include embossing or debossing of logos or other branding information on flat surfaces.
- Various material inlay possibilities are available to enhance the design.
- It is possible to build top hat returns into all pots and planters, please contact us directly to discuss options and pricing.
- Similarly, drainage holes can be added to all items, given your planting requirements; environmental and aesthetic concerns.

# CIRCULAR POTS



## CYLINDRICAL POT (D)

IGNP020

Material	Glass fibre reinforced polyconcrete
Height	1m (without recessed base)
Diameter	400mm
Weight	22kg
Other Specifications/Notes	Material width: 6 - 8mm, 40mm internal lip return, Horizontal internal support ribs. Detailed drawings can be supplied

IGNP020T    Material: GRP   Height: 80mm - 20mm gap from top view   Weight: 2kg



## CYLINDRICAL COLLARED PLANTER

IGNP023

Material	Glass fibre reinforced polyconcrete
Height	1.1m (including 100mm high recessed base)
Diameter	800mm, collar diameter increases to 860mm – 250mm down from internal lip return.
Weight	38kg
Other Specifications/Notes	Material width: 6 - 8mm, 40mm internal lip return, Horizontal internal support ribs. Detailed drawings can be supplied

IGNP010T    Material: GRP   Height: 80mm - 20mm gap from top view   Weight: 8kg



- These products can include embossing or debossing of logos or other branding information on flat surfaces.
- Various material inlay possibilities are available to enhance the design.
- It is possible to build top hat returns into all pots and planters, please contact us directly to discuss options and pricing.
- Similarly, drainage holes can be added to all items, given your planting requirements; environmental and aesthetic concerns.



# ELLIPTICAL POTS



## SEMI-ELLIPTICAL POT (SMALL)

IGNP005

Material	Glass fibre reinforced polyconcrete
Height	900mm (Including 100mm high recessed base)
Width	1.7m
Inner Radius/Diameter	440mm / 880mm (If two halves placed together)
Length	1.1m
Weight	68kg
Other Specifications/Notes	Material width: 6 - 8mm, 40mm internal lip return, Horizontal internal support ribs. Detailed drawings can be supplied

IGNP005T    Material: GRP   Height: 80mm (20mm gap from side view)   Weight: 23kg



## SEMI-ELLIPTICAL POT (LARGE)

IGNP006

Material	Glass fibre reinforced polyconcrete
Height	900mm (Including 100mm high recessed base)
Width	1.7m
Inner Radius/Diameter	440mm / 880mm (If two halves placed together)
Length	1.7m
Weight	74kg
Other Specifications/Notes	Material width: 6 - 8mm, 40mm internal lip return, Horizontal internal support ribs. Detailed drawings can be supplied

IGNP006T    Material: GRP   Height: 80mm (20mm gap from side view)   Weight: 25kg



## QUARTER SECTION POT

IGNP008

Material	Glass fibre reinforced polyconcrete
Height	850mm (Including 100mm high recessed base)
Width	1.5m (Width of two faces)
Diagonal Face Radius	1.5m
Weight	58kg
Other Specifications/Notes	Material width: 6 - 8mm, 40mm internal lip return, Horizontal internal ribs. Detailed drawings can be supplied

IGNP008T    Material: GRP   Height: 80mm (20mm gap from side view)   Weight: 18kg

- These products can include embossing or debossing of logos or other branding information on flat surfaces.
- Various material inlay possibilities are available to enhance the design.
- It is possible to build top hat returns into all pots and planters, please contact us directly to discuss options and pricing.
- Similarly, drainage holes can be added to all items, given your planting requirements; environmental and aesthetic concerns.







# SQUARE PLANTERS



## 1.2M SQUARE PLANTER (750mm HIGH)

IGNP-SQ-001

Material	Glass fibre reinforced polyconcrete
Height	750mm (Including 100mm high recessed base)
Width	1.2m (top), 1.1m (bottom)
Weight	62kg
Available Variations	Possible to provide without a base to allow for in-ground tree planting through planter sleeve
Other Specifications/Notes	Material width: 6 - 8mm, 40mm internal lip return, Horizontal internal ribs. Detailed drawings can be supplied



IGNP-SQ-001T    Material: GRP    Height: 80mm (20mm gap from side view)    Weight: 11kg

## 1.2M SQUARE PLANTER (900mm HIGH)

IGNP-SQ-002

Material	Glass fibre reinforced polyconcrete
Height	900mm (Including 100mm high recessed base)
Width	1.2m (top), 1.1m (bottom)
Weight	73kg
Available Variations	Possible to provide without a base to allow for in-ground tree planting through planter sleeve
Other Specifications/Notes	Material width: 6 - 8mm, 40mm internal lip return, Horizontal internal ribs. Detailed drawings can be supplied



IGNP-SQ-002T    Material: GRP    Height: 80mm (20mm gap from side view)    Weight: 11kg

- These products can include embossing or debossing of logos or other branding information on flat surfaces.
- Various material inlay possibilities are available to enhance the design.
- It is possible to build top hat returns into all pots and planters, please contact us directly to discuss options and pricing.
- Similarly, drainage holes can be added to all items, given your planting requirements; environmental and aesthetic concerns.



# SQUARE PLANTERS



## 1.2M SQUARE PLANTER (1.1m HIGH)

IGNP-SQ-005

Material	Glass fibre reinforced polyconcrete
Height	1.1m (Including 100mm high recessed base)
Width	1.2m (top), 1.1m (bottom)
Weight	89kg
Available Variations	Possible to provide without a base to allow for in-ground tree planting through planter sleeve
Other Specifications/Notes	Material width: 6 - 8mm, 40mm internal lip return, Horizontal internal ribs. Detailed drawings can be supplied

IGNP-SQ-005T    Material: GRP    Height: 80mm (20mm gap from side view)    Weight: 15kg



## 700MM SQUARE PLANTER (1m HIGH)

IGNP-SQ-003

Material	Glass fibre reinforced polyconcrete
Height	1m (Including 100mm high recessed base)
Width	700mm
Weight	36kg
Other Specifications/Notes	Material width: 6 - 8mm, 40mm internal lip return, Horizontal internal ribs. Detailed drawings can be supplied

IGNP-SQ-003T    Material: GRP    Height: 80mm (20mm gap from side view)    Weight: 5kg



## 700MM SQUARE PLANTER (550mm HIGH)

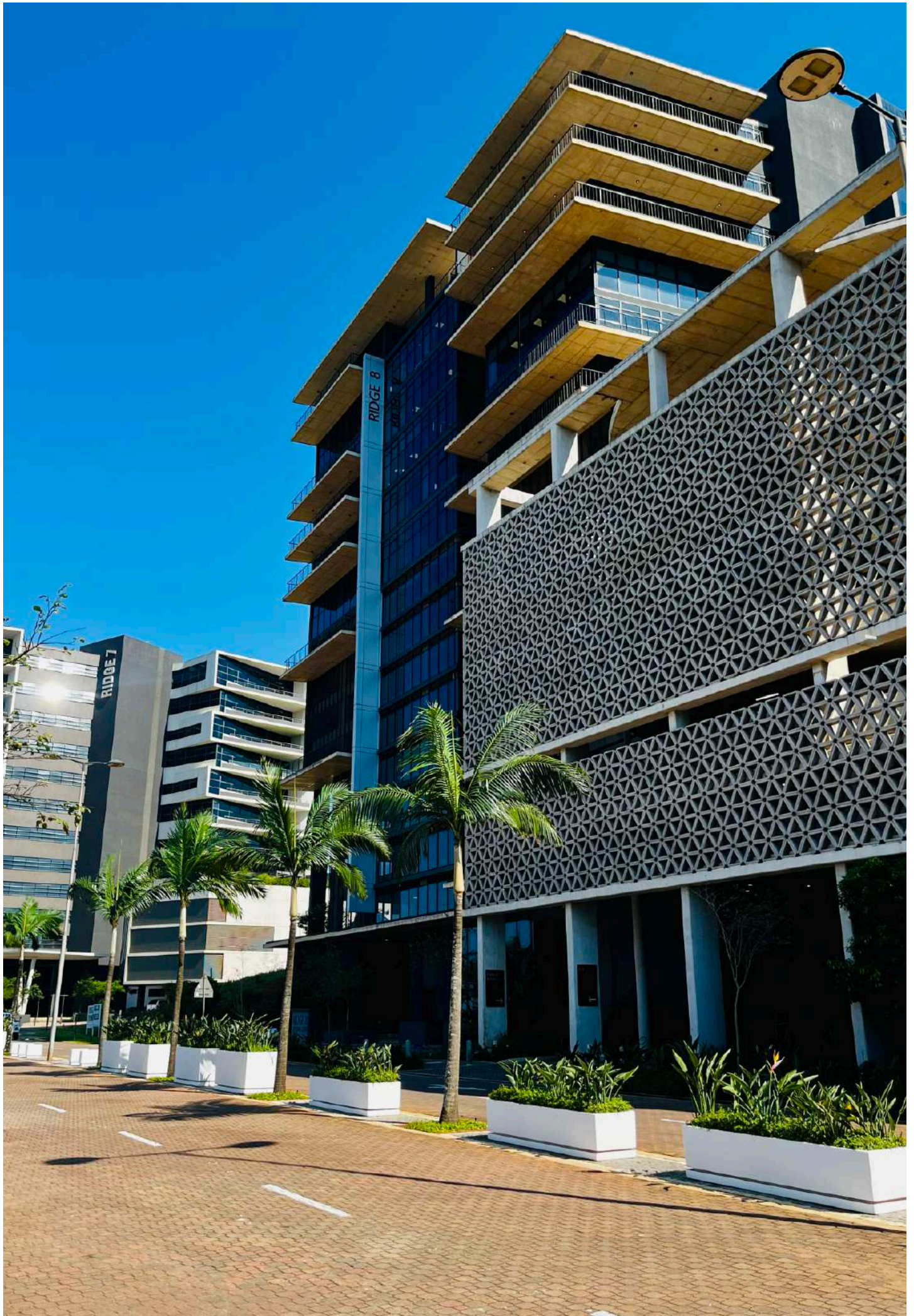
IGNP-SQ-004

Material	Glass fibre reinforced polyconcrete
Height	550mm (Including 100mm high recessed base)
Width	700mm
Weight	28kg
Other Specifications/Notes	Material width: 6 - 8mm, 40mm internal lip return, Horizontal internal ribs. Detailed drawings can be supplied

IGNP-SQ-004T    Material: GRP    Height: 80mm (20mm gap from side view)    Weight: 5kg

- These products can include embossing or debossing of logos or other branding information on flat surfaces.
- Various material inlay possibilities are available to enhance the design.
- It is possible to build top hat returns into all pots and planters, please contact us directly to discuss options and pricing.
- Similarly, drainage holes can be added to all items, given your planting requirements; environmental and aesthetic concerns.







# RECTANGULAR PLANTERS



## RECTANGULAR TROUGH PLANTER

IGNP-REC-006

Material	Glass fibre reinforced polyconcrete
Height	800mm (Including 100mm high recessed base)
Width	750mm
Length	1.75m
Weight	60kg
Other Specifications/Notes	Material width: 6 - 8mm, 40mm internal lip return, Horizontal internal ribs. Detailed drawings can be supplied

IGNP-REC-006T    Material: GRP    Height: 80mm (20mm gap from side view)    Weight: 20kg



## RECTANGULAR TROUGH PLANTER

IGNP-REC-017

Material	Glass fibre reinforced polyconcrete
Height	850mm (Including 100mm high recessed base)
Width	1m
Length	1.5m
Weight	69kg
Other Specifications/Notes	Material width: 6 - 8mm, 40mm internal lip return, Horizontal internal ribs. Detailed drawings can be supplied

IGNP-REC-017T    Material: GRP    Height: 80mm (20mm gap from side view)    Weight: 24kg



## RECTANGULAR TROUGH PLANTER

IGNP-REC-003

Material	Glass fibre reinforced polyconcrete
Height	900mm (Including 100mm high recessed base)
Width	550mm
Length	700mm
Weight	35kg
Other Specifications/Notes	Material width: 6-8mm, 40mm internal lip return, Horizontal internal ribs. Detailed drawings can be supplied.

IGNP-REC-003T    Material: GRP    Height: 80mm (20mm gap from side view)    Weight: 8kg

- These products can include embossing or debossing of logos or other branding information on flat surfaces.
- Various material inlay possibilities are available to enhance the design.
- It is possible to build top hat returns into all pots and planters, please contact us directly to discuss options and pricing.
- Similarly, drainage holes can be added to all items, given your planting requirements; environmental and aesthetic concerns.

# RECTANGULAR PLANTERS



## RECTANGULAR TROUGH PLANTER

IGNP-REC-011

Material	Glass fibre reinforced polyconcrete
Height	900mm (Including 100mm high recessed base)
Width	750mm
Length	1.2m
Weight	62kg
Other Specifications/Notes	Material width: 6 - 8mm, 50mm internal lip return, Horizontal internal ribs. Detailed drawings can be supplied

IGNP-REC-011T    Material: GRP    Height: 80mm (20mm gap from side view)    Weight: 9kg



## RECTANGULAR TROUGH PLANTER

IGNP-REC-002

Material	Glass fibre reinforced polyconcrete
Height	550mm (Including 100mm high recessed base)
Width	550mm
Length	900mm
Weight	28kg
Other Specifications/Notes	Material width: 6 - 8mm, 40mm internal lip return, Horizontal internal ribs. Detailed drawings can be supplied

IGNP-REC-002T    Material: GRP    Height: 80mm (20mm gap from side view)    Weight: 6kg



## RECTANGULAR TROUGH PLANTER

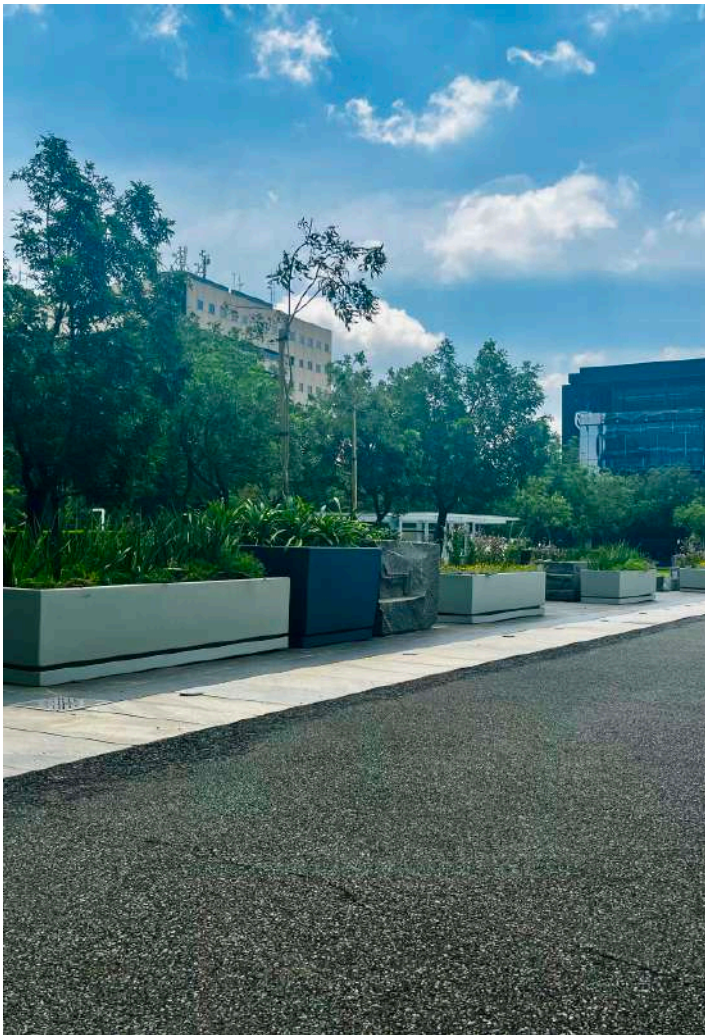
IGNP-REC-009

Material	Glass fibre reinforced polyconcrete
Height	450mm (Including 100mm high recessed base)
Width	400mm
Length	1.25m
Weight	28kg
Other Specifications/Notes	Material width: 6 - 8mm, 40mm internal lip return, Horizontal internal ribs. Detailed drawings can be supplied

IGNP-REC-009T    Material: GRP    Height: 80mm (20mm gap from side view)    Weight: 5.5kg

- These products can include embossing or debossing of logos or other branding information on flat surfaces.
- Various material inlay possibilities are available to enhance the design.
- It is possible to build top hat returns into all pots and planters, please contact us directly to discuss options and pricing.
- Similarly, drainage holes can be added to all items, given your planting requirements; environmental and aesthetic concerns.







# RECTANGULAR PLANTERS



## RECTANGULAR TROUGH PLANTER

IGNP-REC-014

Material	Glass fibre reinforced polyconcrete
Height	450mm (Including 100mm high recessed base)
Width	800mm
Length	1.6m
Weight	33kg
Other Specifications/Notes	Material width: 6 - 8mm, 40mm internal lip return, Horizontal internal ribs. Detailed drawings can be supplied

IGNP-REC-014T    Material: GRP    Height: 80mm (20mm gap from side view)    Weight: 18kg



## RECTANGULAR TROUGH PLANTER

IGNP-REC-004

Material	Glass fibre reinforced polyconcrete
Height	350mm (Including 100mm high recessed base)
Width	390mm
Length	2m
Weight	45kg
Other Specifications/Notes	Material width: 6 - 8mm, 40mm internal lip return, Horizontal internal ribs. Detailed drawings can be supplied

IGNP-REC-004T    Material: GRP    Height: 80mm (20mm gap from side view)    Weight: 18kg



## RECTANGULAR TROUGH PLANTER

IGNP-REC-019

Material	Glass fibre reinforced polyconcrete
Height	500mm (Including 100mm high recessed base)
Width	600mm
Length	2.4m
Weight	78kg
Other Specifications/Notes	Material width: 6 - 8mm, 40mm internal lip return, Horizontal internal ribs. Detailed drawings can be supplied

IGNP-REC-019T    Material: GRP    Height: 80mm (20mm gap from side view)    Weight: 17kg

- These products can include embossing or debossing of logos or other branding information on flat surfaces.
- Various material inlay possibilities are available to enhance the design.
- It is possible to build top hat returns into all pots and planters, please contact us directly to discuss options and pricing.
- Similarly, drainage holes can be added to all items, given your planting requirements; environmental and aesthetic concerns.



# ARC-COMBINATION PLANTERS



## ARC PLANTER

IGNP022

Material	Glass fibre reinforced polyconcrete
Height	800mm (with 100mm high recessed base)
Width	500mm
Length	1.3m
Weight	76kg
Available Variations	
Other Specifications/Notes	Material width: 6-8mm, 40mm internal lip return, Horizontal internal support ribs. Designed to fit with IGNF059 -Arc Bench. Detailed drawings can be supplied

IGNP022T      Material: GRP   Height: 80mm (20mm gap from side view)   Weight: 18kg

## MODULAR PLANTER

IGNX028

Material	Glass fibre reinforced polyconcrete
Height	500mm
Width	1m (Plus 150mm extension to join pieces)
Length	1m (Plus 150mm extension to join pieces)
Available Variations	Possible to provide without a base to allow for in-ground tree planting through planter sleeve
Other Specifications/Notes	Detailed drawings can be supplied. Material thickness 6-8mm, with 40mm internal lip return. Drip tray optional

IGNX028T      Material: GRP   Height: 80mm (20mm gap from side view)   Weight: -

## PENTAGONAL PLANTER

IGNP021

Material	Glass fibre reinforced polyconcrete
Height	500mm
Width	920mm (each side panel is 600mm wide)
Length	970mm
Weight	33kg
Available Variations	Possible to provide without a base to allow for in-ground tree planting through planter sleeve
Other Specifications/Notes	Detailed drawings can be supplied. Material thickness 6-8mm with 40mm internal lip return.

IGNP021T      Material: GRP   Height: 30mm (20mm gap from side view)   Weight: 3kg



- These products can include embossing or debossing of logos or other branding information on flat surfaces.
- Various material inlay possibilities are available to enhance the design.
- It is possible to build top hat returns into all pots and planters, please contact us directly to discuss options and pricing.
- Similarly, drainage holes can be added to all items, given your planting requirements; environmental and aesthetic concerns.

# OVER-SIZED PLANTERS



## RECTANGULAR TROUGH PLANTER

IGNP-REC-010

Material	Glass fibre reinforced polyconcrete
Height	1.2m (Including 100mm high recessed base)
Width	1.2m
Length	2.4m
Weight	170kg
Other Specifications/Notes	Material width: 6 - 8mm, 60mm internal lip return, Horizontal internal ribs. Detailed drawings can be supplied

IGNP-REC-010T    Material: GRP   Height: 80mm (20mm gap from side view)   Weight: 38kg

## RECTANGULAR TROUGH PLANTER (4m)

IGNX023

Material	Glass fibre reinforced polyconcrete
Height	500mm (Includes 100mm high recessed base height)
Width	500mm
Length	4m
Weight	-
Other Specifications/Notes	Material width: 6-8mm, 40mm internal lip return, Horizontal internal ribs. Detailed drawings can be supplied

IGNX023T    Material: GRP   Height: 80mm (20mm gap from side view)   Weight: -

## SQUARE PLANTER (2.5m)

IGNX022

Material	Glass fibre reinforced polyconcrete
Height	640mm (including 100mm high recessed base)
Width	2.5m
Length	2.5m
Weight	135kg
Other Specifications/Notes	Material width: 6-8mm, 40mm internal lip return, Horizontal internal ribs. Detailed drawings can be supplied

IGNX022T    Material: GRP   Height: 80mm (20mm gap from side view)   Weight: -

- These products can include embossing or debossing of logos or other branding information on flat surfaces.
- Various material inlay possibilities are available to enhance the design.
- It is possible to build top hat returns into all pots and planters, please contact us directly to discuss options and pricing.
- Similarly, drainage holes can be added to all items, given your planting requirements; environmental and aesthetic concerns.





# PUBLIC SPACE INSTALLATIONS

# BOLLARDS



## RECTANGULAR TRAFFIC BOLLARD

IGNS005

Material	Polyconcrete
Height	500mm (Includes recessed base height of 125mm)
Width	300mm
Length	500mm
Weight	31kg (Excluding cementitious concrete core)
Other Specifications/Notes	Material width: 25mm (Can be filled with cementitious concrete core), Base can be cut to 75mm/50mm Detailed drawings can be supplied



## 400MM TRAFFIC BOLLARD

IGNS001

Material	Polyconcrete
Height	500mm (Includes recessed base height of 100mm)
Width	400mm
Length	400mm
Weight	17kg (Excluding cementitious concrete core)
Other Specifications/Notes	Material width: 20mm (Can be filled with cementitious concrete core), Base can be cut to 75mm/50mm Detailed drawings can be supplied



## 500MM TRAFFIC BOLLARD

IGNS002

Material	Polyconcrete
Height	500mm (Includes recessed base height of 125mm)
Width	500mm
Length	500mm
Weight	56kg (Excluding cementitious concrete core)
Other Specifications/Notes	Material width: 25mm (Can be filled with cementitious concrete core), Base can be cut to 75mm/50mm Detailed drawings can be supplied

- These products can include embossing or debossing of logos or other branding information on flat surfaces.
- Various material inlay possibilities are available to enhance the design.



# BOLLARDS



**1M TRAFFIC BOLLARD**

IGNS003

Material	Polyconcrete
Height	500mm (Includes recessed base height of 125mm)
Width	1m
Length	1m
Weight	91kg (Excluding cementitious concrete core)
Other Specifications/Notes	Material width: 20mm (Can be filled with cementitious concrete core), Base can be cut to 75mm/50mm Detailed drawings can be supplied



**1.2M TRAFFIC BOLLARD**

IGNS004

Material	Polyconcrete
Height	500mm (Includes recessed base height of 125mm)
Width	1.2m
Length	1.2m
Weight	76kg (Excluding cementitious concrete core)
Other Specifications/Notes	Material width: 25mm (Can be filled with cementitious concrete core), Base can be cut to 75mm/50mm Detailed drawings can be supplied



**PLATFORM BOLLARD**

IGNS011

Material	Polyconcrete
Height	550mm (Recessed base height 100mm)
Width	500mm
Length	500mm
Weight	27kg (Excluding cementitious concrete core)
Other Specifications/Notes	Material width: 20mm (Can be filled with cementitious concrete core), 15mm chamfer to all corners, Includes vertical debossed detail on two faces Detailed drawings can be supplied

- These products can include embossing or debossing of logos or other branding information on flat surfaces.
- Various material inlay possibilities are available to enhance the design.

# BOLLARDS



CIRCULAR TRAFFIC BOLLARD A

IGNS012

Material	Glass fibre reinforced polyconcrete
Height	600mm (Includes recessed base height of 100mm)
Diameter	500mm
Weight	9kg (Excluding cementitious concrete core)
Other Specifications/Notes	Material width: 6 - 8mm (Can be filled with cementitious concrete core), Detailed drawings can be supplied



CIRCULAR TRAFFIC BOLLARD B

IGNS013

Material	Glass fibre reinforced polyconcrete
Height	500mm (Includes recessed base height of 100mm)
Diameter	400mm
Weight	6kg (Excluding cementitious concrete core)
Other Specifications/Notes	Material width: 6 - 8mm (Can be filled with cementitious concrete core), Detailed drawings can be supplied



CONICAL BOLLARD

IGNX053

Material	Polyconcrete
Height	600mm (with indent at 300mm)
Diameter	300mm (diameter at mid-point 200mm)
Weight	65kg
Fixed Option	Cementitious concrete fill, 12mm rebar that protrudes 150mm for fixing purposes
Removable Option	Cementitious concrete fill, 52mm x 52mm x 100mm void in bottom for fixing purposes. Void includes holes for fixing pin. Locking mechanism also supplied: 300mm long galvanised square tube, M10 stainless steel fixing bolt and nylock nuts. Detailed drawings can be supplied

- These products can include embossing or debossing of logos or other branding information on flat surfaces.
- Various material inlay possibilities are available to enhance the design.



# BOLLARDS



ELLIPSE BOLLARD

IGNS006

Material	Polyconcrete
Height	800mm
Top Ellipse	120mm x 80mm
Bottom Ellipse	240mm x 160mm
Fixed Option	Cementitious concrete fill 12mm rebar that protrudes 150mm for fixing purposes Weight: 48kg
Removable Option	Cementitious concrete fill 52mm x 52mm x 100mm void in bottom for fixing purposes Void includes holes for fixing pin Locking mechanism also supplied: 300mm long galvanised square tube, M10 stainless steel fixing bolt and nylock nuts Weight 48kg. Detailed drawings can be supplied



CYLINDRICAL BOLLARD

IGNX054

Material	Polyconcrete
Height	900mm
Diameter	120mm
Weight	45kg
Fixed Option	Cementitious concrete fill. 12mm rebar that protrudes 150mm for fixing purposes
Removable Option	Cementitious concrete fill. 52mm x 52mm x 100mm void in bottom for fixing purposes. Void includes holes for fixing pin. Locking mechanism also supplied: 300mm long galvanised square tube, M10 stainless steel fixing bolt and nylock nuts. Detailed drawings can be supplied



# BINS

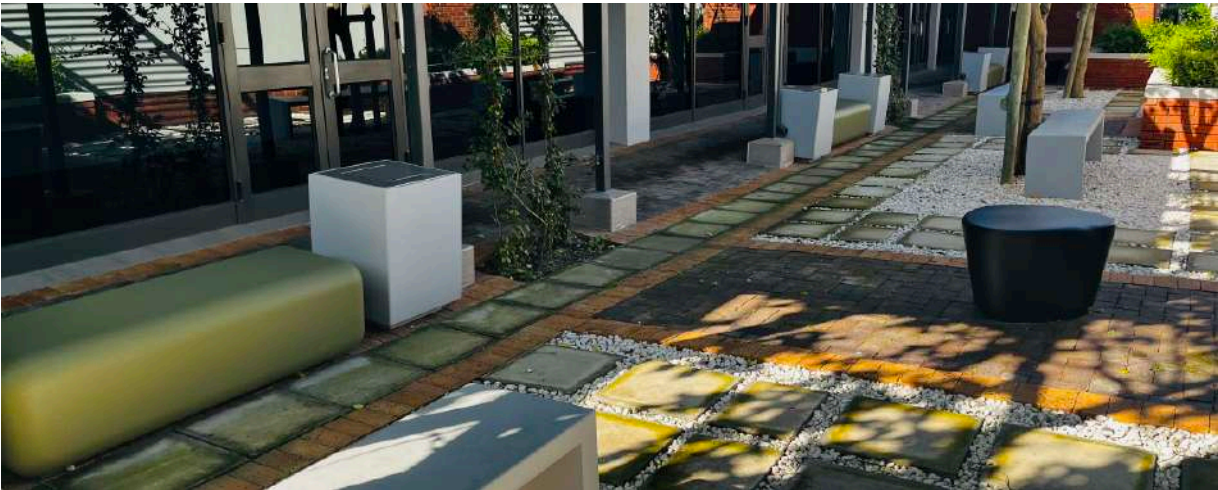


## EXTERNAL BIN

IGNS007

Material	Polyconcrete
Height	770mm (with 100mm recessed base)
Width	500mm
Length	500mm
Weight	78kg
Other Specifications/Notes	Includes stainless steel removable swivel lid (larger view) or glass fibre reinforced polyconcrete removable lid (thumbnail); both have a 300mm square opening and PVC liner. Stainless steel swivel lid includes internal stopper for the swivel

Mounted ashtrays can be attached to any flat sided bin - IGNS007, IGNS008 and IGNS049. These can be ordered in either stainless or black powder coated steel.



- These products can include embossing or debossing of logos or other branding information on flat surfaces.
- Various material inlay possibilities are available to enhance the design.



BINS



INTERNAL RECYCLING BIN

IGNS008

Material	Polyconcrete
Height	826mm
Width	400mm
Length	700mm
Weight	85kg
Other Specifications/Notes	Includes glass fibre reinforced polyconcrete front doors with 2 PVC bin liners. Detailed drawings can be supplied



ANIMAL PROOF BIN (SMALL)

IGNS015

Material	Polyconcrete
Height	1m (including 100mm high recessed base)
Width	500mm
Length	500mm
Weight	-
Other Specifications/Notes	Includes a stainless steel swivel lid, self-closing when fully open as well as in closure. PVC bin liner and locking system attached to glass fibre reinforced polyconcrete back door. Detailed drawings can be supplied.



- These products can include embossing or debossing of logos or other branding information on flat surfaces.
- Various material inlay possibilities are available to enhance the design.

# BINS



TAPERED SQUARE BIN

IGNS009

Material	Polyconcrete
Height	900mm
Width	600mm (top), 400mm (bottom)
Weight	68kg
Other Specifications/Notes	Includes removable stainless steel swivel lid with 350mm square opening and glass fibre reinforced bin liner, lid includes internal stopper for swivel piece



CIRCULAR BIN

IGNS014

Material	Polyconcrete
Height	800mm (including 50mm high recessed base)
Top Diameter	580mm
Bottom Diameter	480mm
Weight	65kg
Other Specifications/Notes	Includes removable GRP swivel lid with internal stopper or GRP lid with no swivel. GRP bin liner included



- These products can include embossing or debossing of logos or other branding information on flat surfaces.
- Various material inlay possibilities are available to enhance the design.



---

## COUNTER FRONTS, CANOPIES AND SIGNAGE

Canopies and counter fronts can be made to order from glass fibre reinforced polyconcrete to complete entrances, shop fitting and information areas. These can be made to size and shape, and include embossed or debossed logos, by-lines or relevant detail. Please contact us directly to discuss possibilities.



**COUNTER FRONT SQUARE**



**COUNTER FRONT CURVED**



**COUNTER FRONT FACETED**



- These products can include embossing or debossing of logos or other branding information on flat surfaces.
- Various material inlay possibilities are available to enhance the design.

# COUNTER FRONTS, CANOPIES AND SIGNAGE



## CANOPIES

Canopies of varied scope can be made to order from glass fibre reinforced polyconcrete for entrances, shopfronts and weather cover. We can also tie in logo and pigment features from your branding, as well as embossing and debossing detail if required. Please contact us directly to discuss possibilities.

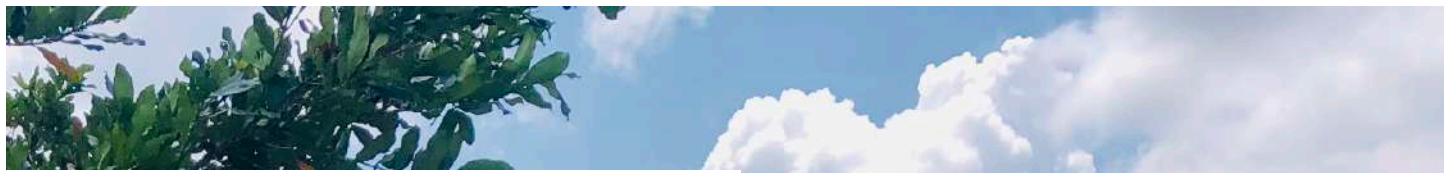
## SIGNAGE

Signage of varied scope can be made to order from glass fibre reinforced polyconcrete for entrances, shopfronts, directional use and general marketing. We can also tie in logo and pigment features from signage into embossing or debossing detail on our other products. Please contact us directly to discuss possibilities.



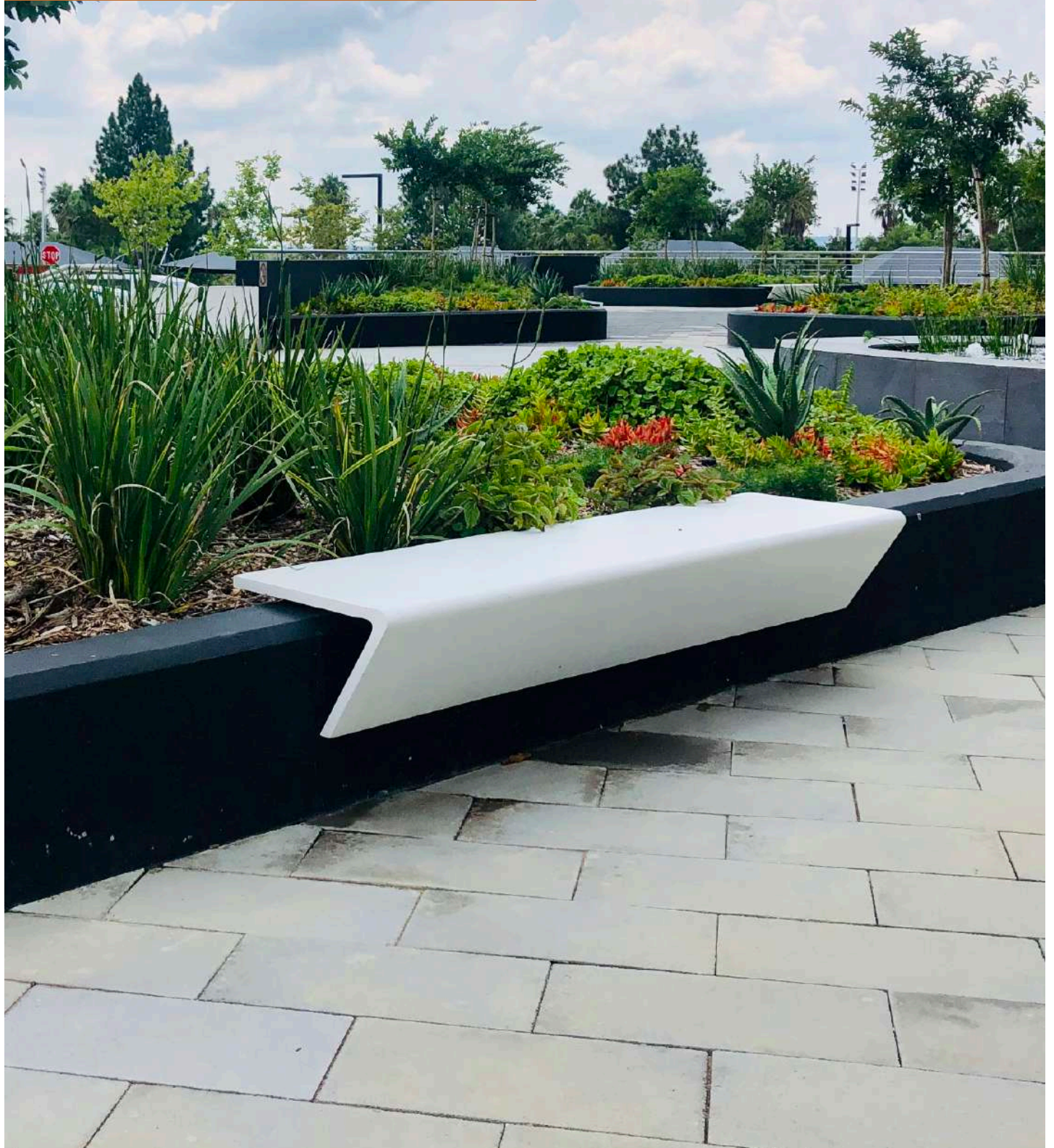
- These products can include embossing or debossing of logos or other branding information on flat surfaces.
- Various material inlay possibilities are available to enhance the design.





# PANELING APPLICATIONS

---



# PANELING APPLICATIONS

Igneous Polyconcrete is also an excellent product to use aesthetically as a panel installation in all interiors, exteriors and for hard landscaping. We have done extensive work in wall and bench paneling for mixed use landscaping-walkway-seating areas and have now modified standard panels for this purpose. We can manufacture panels to fit most walled structures, to scale and purpose.



## ULTERIOR PANEL BENCH

IGNF060

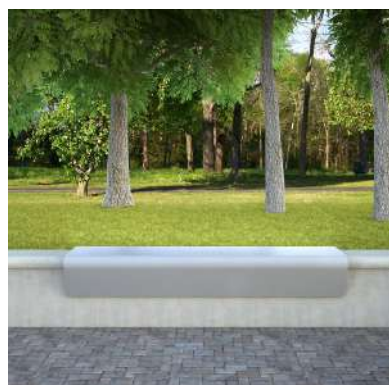
Material	Polyconcrete
Height	500mm
Width	450mm
Length	1.5m
Weight	35kg
Available Variations	Available with or without ellipse cut-outs
Other Specifications/Notes	Detailed drawings can be supplied



## MODIFIED ORGANIC BENCH

IGNF045

Material	Polyconcrete
Height	910mm (Excl wall)
Width	750mm
Length	1.5m
Weight	120kg
Available Variations	
Other Specifications/Notes	Seat height front 260mm, seat height towards back 225mm Detailed drawings can be supplied



## ORACLE BENCH

IGNF047

Material	Polyconcrete
Height	280mm (Excl wall)
Width	480mm
Length	1.8m
Weight	44kg
Available Variations	
Other Specifications/Notes	Detailed drawings can be supplied

- These products can include embossing or debossing of logos or other branding information on flat surfaces.
- Various material inlay possibilities are available to enhance the design.





Innovators in all weather, lightweight polyconcrete



+27 (0) 82 443 0084 | [info@igneous.co.za](mailto:info@igneous.co.za) | [www.igneous.co.za](http://www.igneous.co.za)

